



ARCHITECTURE
ENGINEERING

February 28, 2012

Re: **TRI-COUNTY COUNCIL / SHORE TRANSIT BUS MAINTENANCE FACILITY**
PHASE II
Salisbury, Maryland
2009145.00

ADDENDUM SIX

The contract documents for the above referenced project, dated January 5, 2012 are amended as follows:

CLARIFICATION

1. Question #34 from bidder's questions & answers (addendum #3) sought clarification regarding the exterior window systems. As noted in spec section 084113-2.4-A Kawneer Trifab VG 451T is the correct system. Refer also to attached sketches (MTA-SK-7, MTA-SK-8, & MTA-SK-9) issued via this addendum
2. See attached Bidder's Questions & Answer's spreadsheet issued via this addendum.
3. AIA document A701 "Instructions to Bidders" as noted in the Supplementary general conditions (spec section 008000) is attached via this addendum for reference.
4. Special attention is called out to all bidders to reiterate that the bid evaluation selection matrix (attached as part of addendum #5) is the primary tool used by the owner and architect for review of bids and selection of the bidder whose proposal is most advantageous to the owner's interest. The bidder that accumulates the highest point total based on the (7) selection criteria on this matrix will be awarded the project.
5. As further clarification to general questions regarding the reason for rebidding the project the owner offers the following:

The primary consideration for a rebid was financial. The total funding allotted for this phase of the project is \$ 5,518,700 which includes federal, state and local match. Although the base bid for all of the previous submittals (bid date 2/8/12) came in under the allotted funding; only one came in under when the twelve alternates were considered. That one bid did not meet the 24.02% DBE project goal. Tri County Council believes this project will benefit most if as many of the twelve alternates can be included in the final project cost as possible under the allotted funding.

PROJECT MANUAL

1. **TABLE OF CONTENTS**
 - a. **ADD** Section 101411 Cast Letters
2. **SECTION 101411- CAST LETTERS**
 - a. **ADD** Section in it's entirety with attached.



ARCHITECTURE
ENGINEERING

DRAWINGS

1. SHEET A502 -DETAILS

- a. REPLACE detail 4/A502 with Sketch MTA-SK-7 dated 02/28/12 issued via this addendum
- b. REPLACE detail 5/A502 with Sketch MTA-SK-8 dated 02/28/12 issued via this addendum
- c. REPLACE detail 8/A502 with Sketch MTA-SK-9 dated 02/28/12 issued via this addendum

Attachments: Bidders Questions & Answers through 02/28/12
 AIA form A701 "Instructions to Bidders"
 BMG , Sketch MTA-SK-7 dated 02/28/12
 BMG , Sketch MTA-SK-8 dated 02/28/12
 BMG , Sketch MTA-SK-9 dated 02/28/12

END OF ADDENDUM NO. SIX

200914500_Addendum6-bus-main.doc

BECKER MORGAN GROUP
TCC-SHORE TRANSIT – BUS MAINTENANCE FACILITY - PHASE II
BIDDERS’ QUESTIONS & ANSWERS THROUGH 2/28/12

Q #	ANSWER BY - SKETCH	QUESTION / COMMENT	ANSWER	SPEC. DIV.
-----	------------------------------	--------------------	--------	---------------

New Questions			Addendum #6-February 28, 2012	
1	BMG/ TCC	If the GC has submitted a bid during the previous bid period is it acceptable to use the same bid bond? Or does a new bid bond need to be submitted?	Yes, acceptable to use same bid bond from previous bid for the (4) GC's that submitted bids on 2/8/12. BMG will hold these bid bonds to be attached to new bids unless instructed otherwise by previous bidders.	00
2	TCC MTA	The bid form requires that “All subcontractors or suppliers furnishing over \$100,000 in combined labor and material are bondable.” That requirement may again prohibit bidders from using certain vendors in rebidding the project. The successful bidder is required to execute 100% Performance and Payment Bonds which fully protects the Owner. Please consider waiving the requirement of bonding subcontractors/suppliers and leave subcontractor bonding and the associated cost to the contractors discretion.	Requirement is waived for bonding subcontractors/suppliers furnishing over \$100,000 in combined labor and material. It is the GC's responsibility to execute 100% Performance and Payment Bonds including subcontractor/supplier bonding and their associated costs.	00
3	A&S TCC	Drawing P200 indicates “ <u>Owner supplied, contractor installed compressors and air dryers</u> ” – so as to avoid any ambiguity or misunderstanding please specifically clarify who is responsible to “provide” (furnish & install) the following Referenced as Miscellaneous Equipment on P100: a- Air Compressors b- Air Dryer c- Air Compressor Outlet/Coupler d- Air Hose Reel e- Lube System	Note referred to on drawing P200 is incorrect. Contractor is to provide (furnish and install) all miscellaneous equipment on drawing P100	22
4	BMG	Is General Polymers TPM #115-U2 Troweled Mortar an acceptable substitute for the basis of design product listed in Add Alternate 10?	As noted in previous addendums General Polymers TPM #115-U2 is an acceptable substitute for the Mens & Womens wash and shower rooms. However it is <u>not</u> an acceptable substitute for the service bays (add/alt #10) The service bay spec (Stonclad GS with Stonkote GS4 flooring system) is a	09

BECKER MORGAN GROUP
TCC-SHORE TRANSIT – BUS MAINTENANCE FACILITY - PHASE II
BIDDERS' QUESTIONS & ANSWERS THROUGH 2/28/12

Q #	ANSWER BY - SKETCH	QUESTION / COMMENT	ANSWER	SPEC. DIV.
			trowelled, solid color topcoat finish system where as General Polymers TPM #115-U2 is a flake broadcast system. Flake/broadcast system not the right type of floor for the service bay environment.	
5	BMG	(In the metal roofing spec the basis of design is Garland However, they list other manufacturer's such as :Petersen Aluminum. The Petersen spec for their product does not match the Garland spec, they have a product that comes close, is this still acceptable with a few exceptions to the Garland Spec?)	Petersen Aluminum (Pac-Clad) is an acceptable manufacturer as noted in spec section 074113-2.1-A-3	n/a
7	BMG	Section 064023 – A- Interior standing and running trim associated with casework is referenced in para. 1.2 A (1) – please further clarify or indicate by detail the standing and running trim referenced. B-Shop fabricated wood cabinets are referenced in para. 1.2 a (2) – please specifically detail or indicate which cabinets are to be provided as wood as opposed to plastic laminate casework.	A- no standing & running trim associated with casework unless shown on drawings. B- all cabinets/casework are plastic laminate/solid surface as shown on drawings.	06
8	BMG	Add Alternate 4 Metal Roofing & Siding. Please confirm that the Base Bid (not Add Alt.4) includes the Metal Wall Panels (per the West Elevation 2/A201 –approximately 91’8” in length) and that Add Alternate 4 should then add for the cost to extend the Roof, Soffits and Wall Panels approximately 20’2” in both the North and South Elevations (per 1 & 3/A201).	Correct, base bid includes the metal wall panels for the west elevation. If add/alternate #4 is accepted additional metal roof, soffit and wall panel is required as stated.	07
9	BMG	Section 061600 Sheathing para. 1.2A (2) references “Weather-resistive Barriers” , but, only detail 3/A502 appears to indicate “Air Infiltration Barrier” applied over the Dens Glass Gold Sheathing – major details 1 & 2/A302 and 2/A502 do not indicate this requirement? Please confirm the	Yes – intent is to provide air infiltration barrier as stated. Air Infiltration barrier required at all wall areas where Dens Glass gold sheathing is shown.	06

**BECKER MORGAN GROUP
TCC-SHORE TRANSIT – BUS MAINTENANCE FACILITY - PHASE II
BIDDERS' QUESTIONS & ANSWERS THROUGH 2/28/12**

Q #	ANSWER BY - SKETCH	QUESTION / COMMENT	ANSWER	SPEC. DIV.
		“intent” is for Weather-resistive/Air Infiltration Barriers to be provided over the Dens Glass Gold Sheathing to be provided at those referenced details.		
10	BMG	Section 05400 para. 2.3E references “double deflection track” –please clarify if required.	Standard spec wording for this section,only required if shown on contract drawings or if required based on height of stud wall- see also structural drawings	05
11	BMG	Section 095113-5 para. 2.4 E & F – please clarify if required.	Standard spec wording for this section,will review based on submitted shop drawing for acoustic ceilings	09

SECTION 101411 – CAST LETTERS

PART 1 - GENERAL

1.1 RELATED DOCUMENTS

- A. Drawings and general provisions of the Contract, including General and supplementary Conditions and Division-1 Specification Sections, apply to this Section.

1.2 SUMMARY

- A. This Section includes the following types of signs:
 - 1. Exterior Cast Letters on Building.
- B. Related Sections: The following sections contain requirements that relate to this section:
 - 1. Division 1 "Temporary Facilities and Controls" for temporary project identification signs.
 - 2. Division 10 "Signage".

1.3 SUBMITTALS

- A. General: Submit the following in accordance with Conditions of the Contract and Division 1 Specification Sections.
- B. Product Data: Include manufacturer's construction details relative to materials, dimensions of individual components, profiles, and finishes for each type of sign required.
- C. Shop Drawings: Provide shop drawings for fabrication and erection of letters. Include plans, elevations, and large-scale sections of typical members and other components. Show anchors, grounds, reinforcement, accessories, layout, and installation details.
 - 1. Provide message list for each group of letters required, including large-scale details of wording and layout of lettering.
 - 2. For letters supported by or anchored to permanent construction, provide setting drawings, templates, and directions for installation of anchor bolts and other anchors to be installed as a unit of Work in other Sections.
 - 3. Furnish full-size spacing templates for individually mounted dimensional letters and numbers.
- D. Samples: Provide the following samples for initial selection of color, pattern and surface texture as required and for verification of compliance with requirements indicated.
 - 1. Samples for initial selection of color, pattern, and texture:
 - a. Aluminum: Samples of each finish type and color, on 6-inch-long sections of extrusions and not less than 4-inch squares of sheet or plate, showing the full range of colors available.
 - 2. Samples for verification of color, pattern, and texture selected, and compliance with requirements indicated:

- a. Aluminum: Samples of each finish type and color, on 6-inch-long sections of extrusions and not less than 4-inch squares of sheet or plate. Where finishes involve normal color and texture variations include sample sets showing the full range of variations expected.
- b. Dimensional Letters: Provide one full-size representative sample of each dimensional letter type required, showing letter style, color, and material finish and method of attachment.

1.4 QUALITY ASSURANCE

- A. Single-Source Responsibility: For each separate letter grouping, obtain letters from one source from a single manufacturer.

1.5 PROJECT CONDITIONS

- A. Field Measurements: Take field measurements prior to preparation of shop drawings and fabrication to ensure proper fitting. Show recorded measurements on final shop drawings. Coordinate fabrication schedule with construction progress to avoid delay.

PART 2 - PRODUCTS

2.1 AVAILABLE MANUFACTURERS

- A. Basis-of-Design product: Subject to compliance with requirements, provide products by Innerface Sign Systems, or a comparable product by one of the following:
 1. APCO Architectural Signs.
 2. A.S.I. Sign Systems
 3. PlaquesandLetters.com

2.2 MATERIALS

- A. Aluminum Castings: Provide aluminum castings of alloy and temper recommended by the aluminum producer and finisher for the casting process used and for the use and finish indicated.
- B. Fasteners: Use concealed fasteners fabricated from metals that are not corrosive to the sign material and mounting surface.
- C. Anchors and Inserts: Use nonferrous metal or hot-dipped galvanized anchors and inserts for exterior installations and elsewhere as required for corrosion resistance. Use toothed steel of lead expansion bolt devices for drilled-in-place anchors. Furnish inserts, as required, to be set into concrete or masonry work.

2.7 EXTERIOR CAST LETTERS ON BUILDINGS

- A. Type: Cast aluminum letters. Provide cast metal letters cast aluminum. Furnish cast units with smooth flat faces, sharp corners, true lines and accurate profiles. Provide units free of pits, scale, sand holes, or other defects. Protect exposed surfaces with two coats of clear, non-yellowing lacquer. Provide five-year finish guarantee.
- B. Size: 12” High in Times Roman font.

- C. Location: As directed by owner/architect.
- D. Mounting: Provide concealed anchors which project letters 1/2" from wall; install in accordance with manufacturer's recommendations.
- F. Wording and numbering: As designated on elevations.

PART 3 - EXECUTION

3.1 INSTALLATION

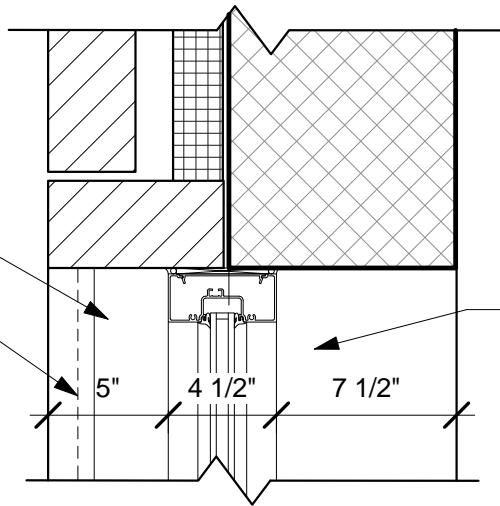
- A. General: Locate letters where indicated, using mounting methods of the type described and in compliance with the manufacturer's instructions.
 - 1. Install letters level, plumb, and at the height indicated, with sign surfaces free from distortion or other defects in appearance.
 - 2. Attach signs with concealed theft-proof fasteners.

3.2 CLEANING AND PROTECTION

- A. At completion of the installation, clean soiled letter surfaces in accordance with the manufacturer's instructions. Repair or replace damaged letters as directed by the Architect. Protect units from damage until acceptance by Owner.

END OF SECTION 101411

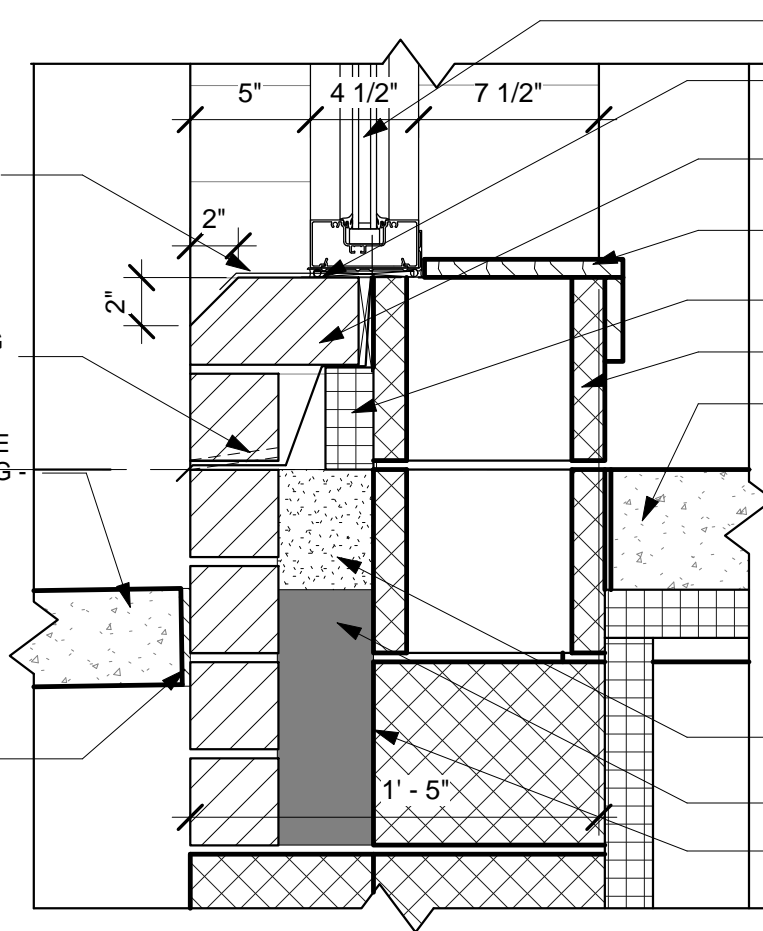
ALUMINUM SILL CAP IN
BED OF SEALANT
SPECIAL SHAPED BRICK
HEADER AT SILL TYP.



SOLID SURFACE SILL

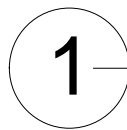
JAMB DETAIL

ALUMINUM SILL CAP IN
BED OF SEALANT
CONTINUOUS FLASHING
WITH WEEPS
CONC. SIDEWALK SLOPE
MIN. 1/8" FROM BUILDING -
SEE CIVIL DRAWINGS



ALUMINUM STOREFRONT
WINDOW
BACKER ROD & SEALANT
BOTH SIDES
SPECIAL SHAPED BRICK
HEADER AT SILL TYP.
SOLID SURFACE SILL AND
APRON
2" RIGID INSULATION
8" EPOXY PAINTED CMU
CONC. SLAB - SEE STRUCT.
FINISH FL. ELEV. 50.26
0' - 0"
FILL CAVITY W/ AGGREGATE
BTWN FLASHING AND GRADE
GROUT CAVITY BELOW GRADE
DAMPPROOFING

1/2" EXPANSION JOINT



REVISED DETAIL 5/A502

SCALE: 1 1/2" = 1'-0"



Salisbury, MD
312 West Main Street
Suite 300
Salisbury, MD 21801
P: 410.546.9100
F: 410.546.9100
www.beckermorgan.com

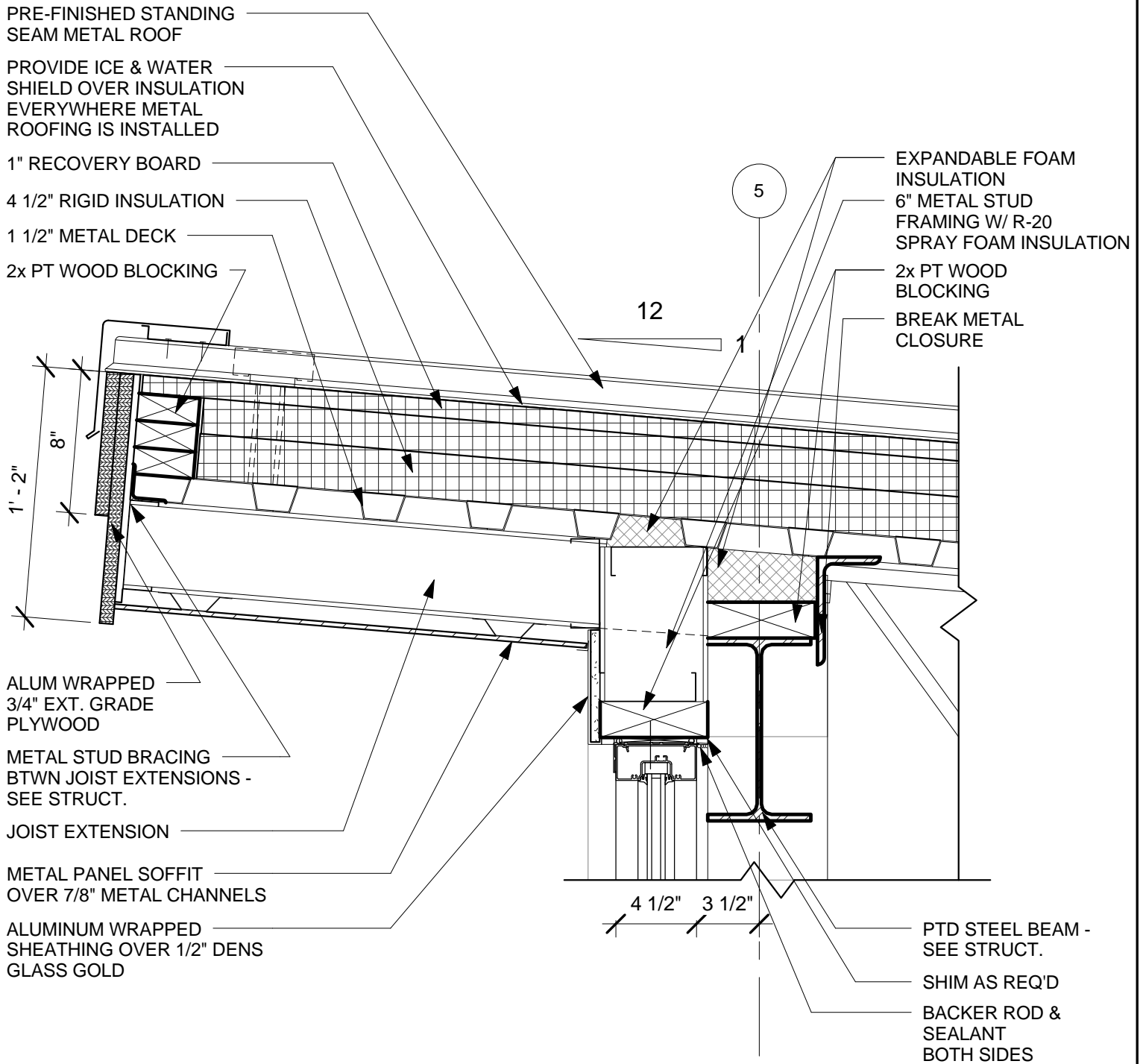
TCC/Shore Transit Bus Maintenance
Facility - Phase II

31855 TRI-COUNTY WAY
SALISBURY, MD 21804

REVISED SILL DETAIL 5/A502

PROJECT NO.: 2009145.00
DATE: 02/28/12
SCALE: 1 1/2" = 1'-0"
DRAWN BY: DNH

MTA-
SK-7



1 REVISED DETAIL 4/A502

SCALE: 1 1/2" = 1'-0"



Salisbury, MD
 312 West Main Street
 Suite 300
 Salisbury, MD 21801
 P: 410.546.9100
 F: 410.546.9100
 www.beckermorgan.com

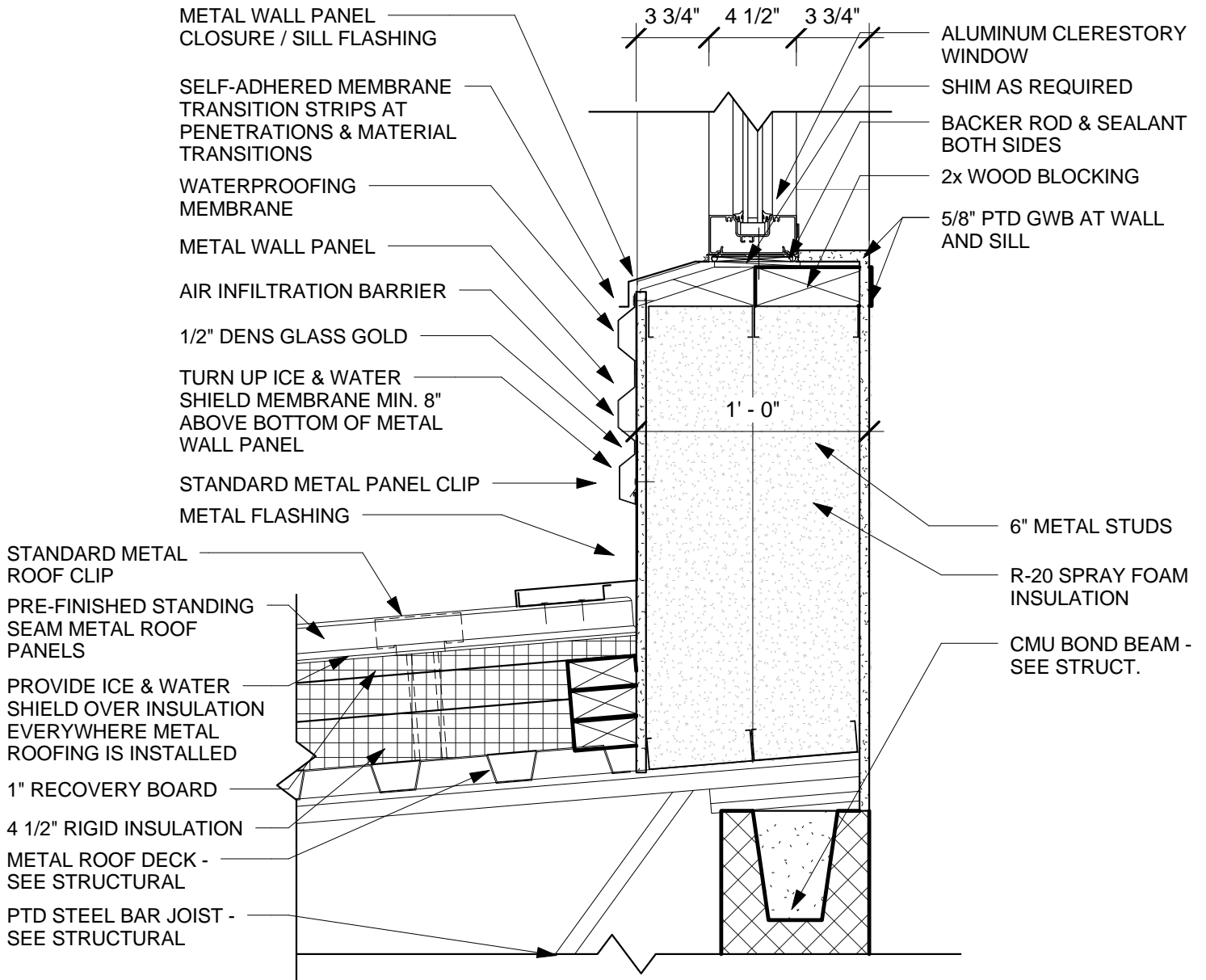
TCC/Shore Transit Bus Maintenance Facility - Phase II

31855 TRI-COUNTY WAY
 SALISBURY, MD 21804

REVISED DETAIL 4/A502

PROJECT NO.:	2009145.00
DATE:	02/28/12
SCALE:	1 1/2" = 1'-0"
DRAWN BY:	DNH

MTA-
SK-8



1 REVISED DETAIL 8/A502
 SCALE: 1 1/2" = 1'-0"