



PROJECT TITLE

TCC/SHORE TRANSIT BUS MAINTENANCE FACILITY - PHASE II

31855 TRI-COUNTY WAY
SALISBURY, MD. 21804

ISSUED FOR BIDDING
DATE: 01/05/12

SHEET TITLE

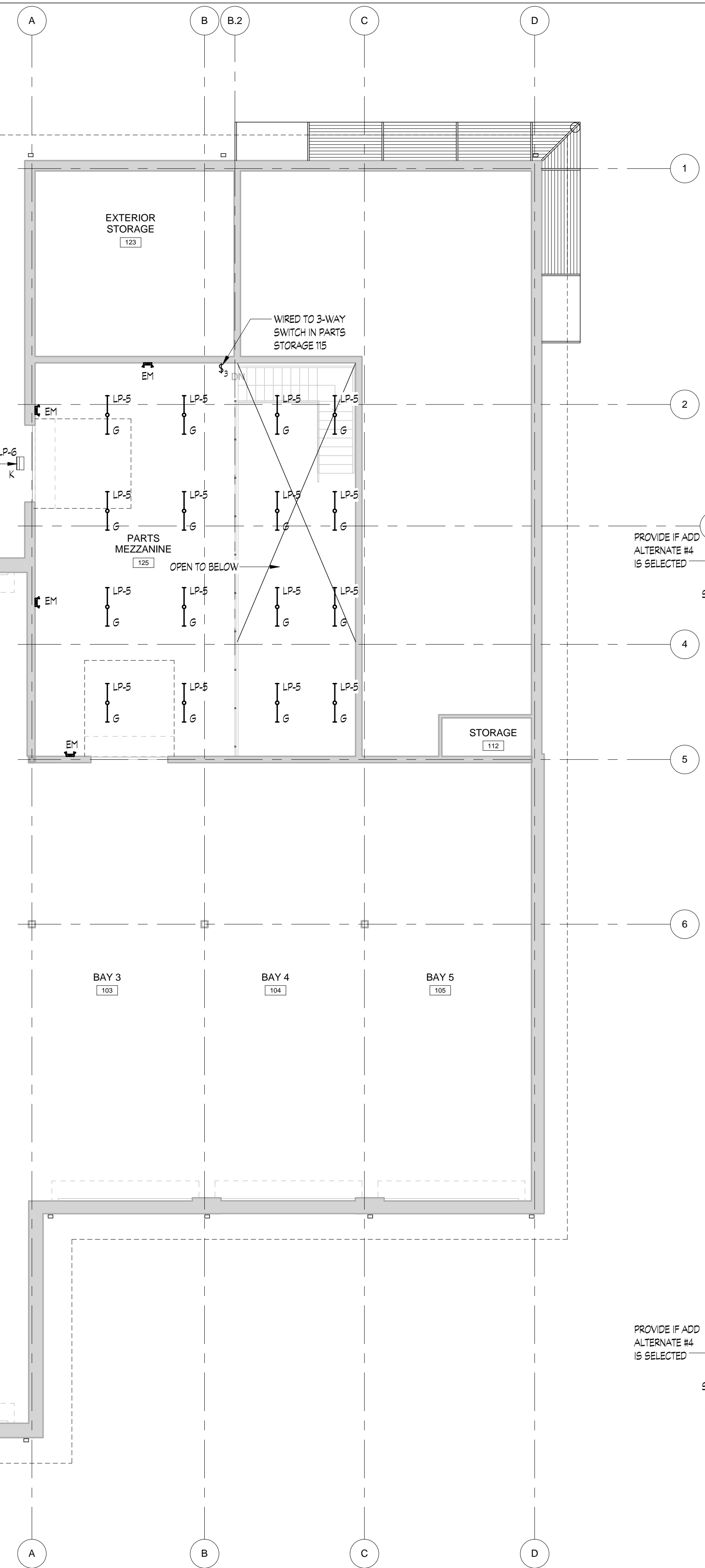
ELECTRICAL LIGHTING PLANS

ISSUE BLOCK

Mark	Date	Description
△	12.21.2001	FIRE SPRINKLER ADDITION
△	11.4.2011	CODE REVIEW COMMENTS
△		Revision Schedule

Project Number	2009145.00
Date	01/05/12
Scale	1/8" = 1'-0"
Drawn By	SM
Checked By	AK

E200

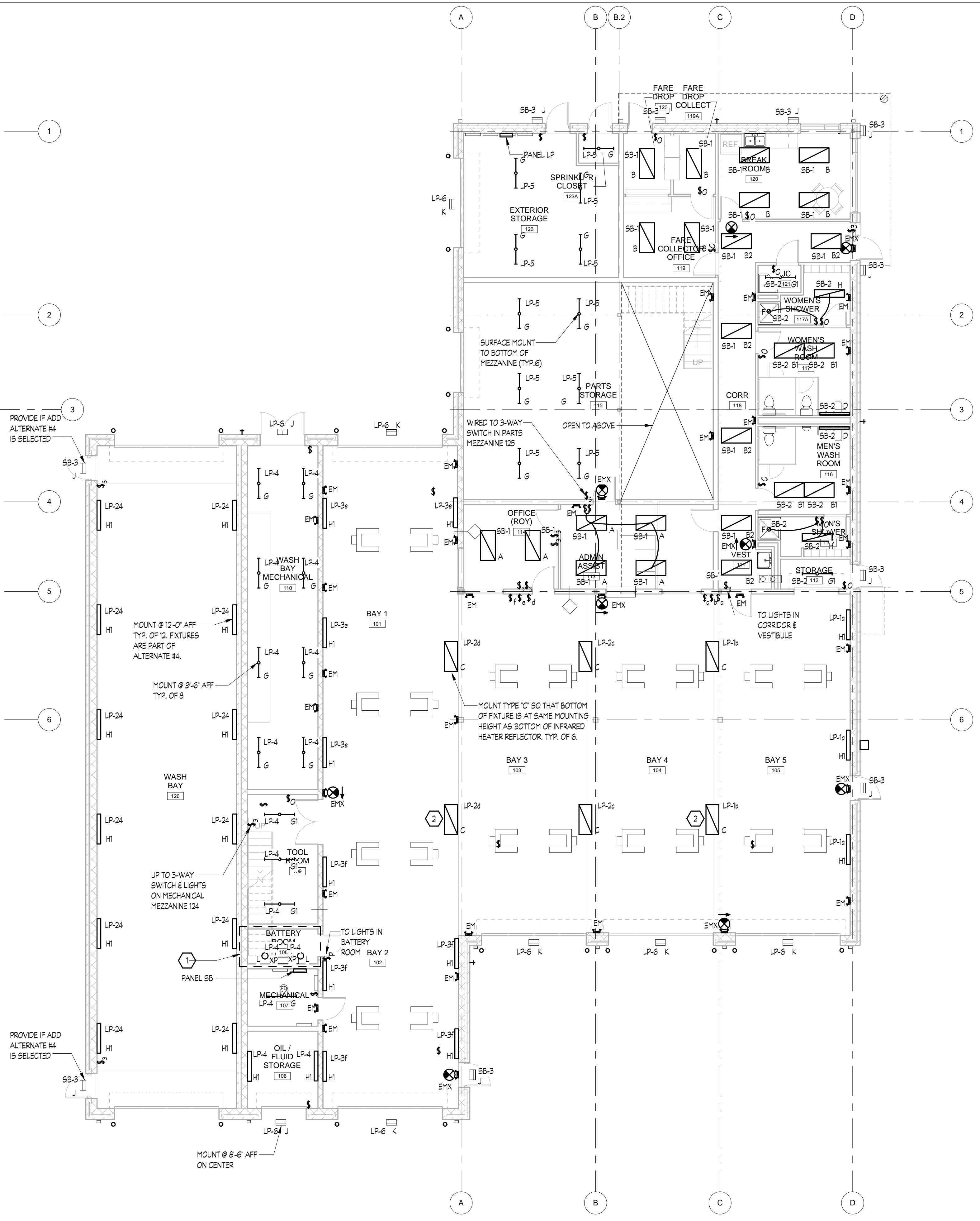


MEZZANINE ELECTRICAL LIGHTING PLAN

SCALE: 1/8" = 1'-0"

GENERAL NOTES

1. CONNECT ALL EXIT AND EMERGENCY LIGHTS TO UNSWITCHED LEG OF CIRCUIT SERVING LIGHTS IN SAME AREA.



FIRST FLOOR ELECTRICAL LIGHTING PLAN

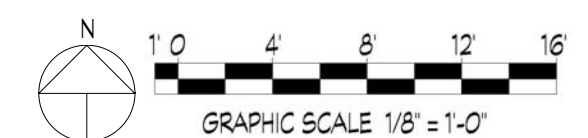
SCALE: 1/8" = 1'-0"

GENERAL NOTES

1. CONNECT ALL EXIT AND EMERGENCY LIGHTS TO UNSWITCHED LEG OF CIRCUIT SERVING LIGHTS IN SAME AREA.

DRAWING NOTES

1. ALL LIGHTS, DEVICES, EQUIPMENT AND CONDUIT IN THIS ROOM WILL BE RATED FOR CLASS 1, DIVISION 1, GROUP B HAZARDOUS LOCATIONS.
2. MAINTAIN 30" SIDE CLEARANCE TO INFRARED HEATERS.



1/4/2012 2:12:47 PM \\salisbury\allen&shariff\comtoday\jobs\101031029\TCC Bus Facility\Active\1031029 MEP.rvt