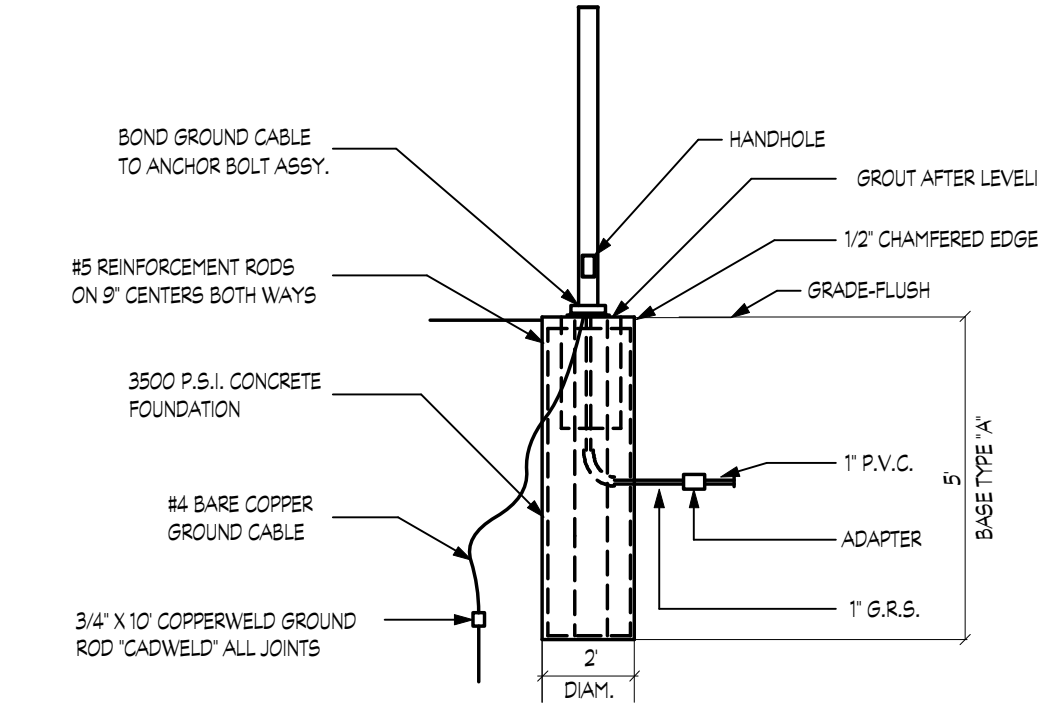


Mark	Date	Description
△	12.21.2011	FIRE SPRINKLER ADDITION
△	11.4.2011	CODE REVIEW COMMENTS

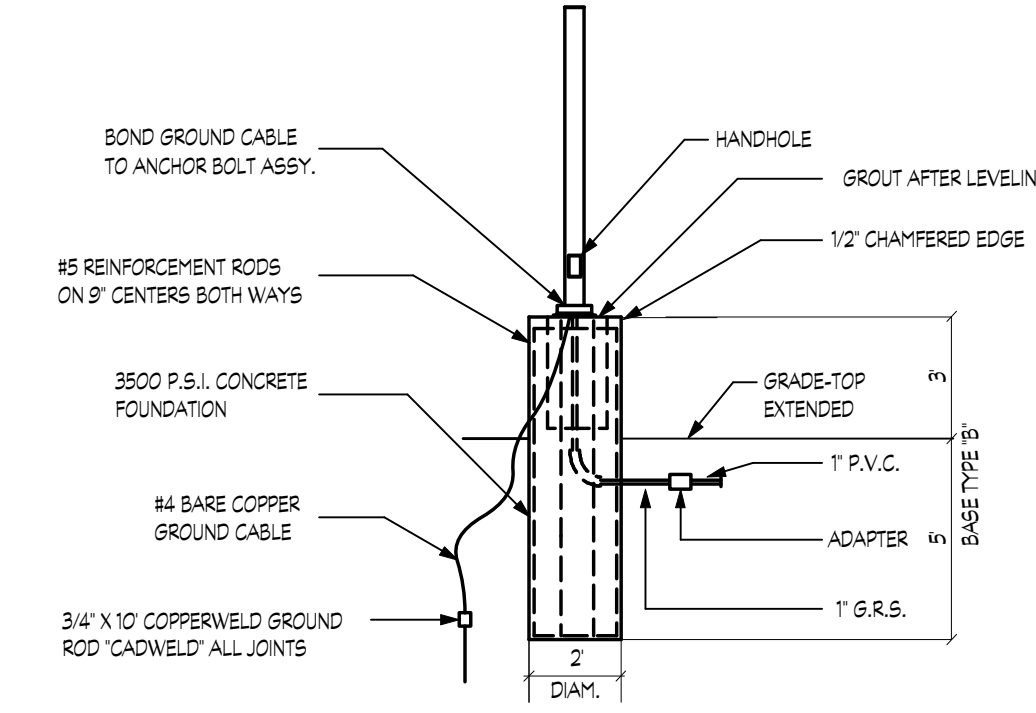
Project Number	2009145.00
Date	01/05/12
Scale	NONE
Drawn By	SM Checked By AK

SITE LIGHTING FIXTURE SCHEDULE		POLE/BASE/MOUNTING	BASE BID	ALTERNATE #1
SYMBOL	DESCRIPTION		MANUFACTURER AND MODEL# (ALL LAMPS LED)	MANUFACTURER AND MODEL# (ALL LAMPS 250W METAL HALIDE)
A	POLE MOUNT SHOE BOX FIXTURE, TYPE II DISTRIBUTION, TEMPERED GLASS LENS, 480V BALLAST, BRONZE FINISH, 1 HEAD	25' HIGH, ROUND STRAIGHT STEEL, CROSS SECTION AND WALL THICKNESS TO SUIT LUMINAIRE EPA AT 100 MPH WIND	MCGRRAW-EDISON# TLM-A06-LED-480-T2-BZ-MA1010-BZ OR EQUAL	MCGRRAW-EDISON# TLM-250-MP-480-25-FG-BZ-MA1010-BZ OR EQUAL
B	POLE MOUNT SHOE BOX FIXTURE, TYPE V DISTRIBUTION, TEMPERED GLASS LENS, 480V BALLAST, BRONZE FINISH, 2 HEADS @ 90°	25' HIGH, ROUND STRAIGHT STEEL, CROSS SECTION AND WALL THICKNESS TO SUIT LUMINAIRE EPA AT 100 MPH WIND	MCGRRAW-EDISON# TLM-A06-LED-480-5WQ-BZ-MA1011-BZ OR EQUAL	MCGRRAW-EDISON# TLM-250-MP-480-55-FG-BZ-MA1011-BZ OR EQUAL
C	POLE MOUNT SHOE BOX FIXTURE, TYPE IV DISTRIBUTION, TEMPERED GLASS LENS, 480V BALLAST, BRONZE FINISH, 2 HEADS @ 90°	25' HIGH, ROUND STRAIGHT STEEL, CROSS SECTION AND WALL THICKNESS TO SUIT LUMINAIRE EPA AT 100 MPH WIND	MCGRRAW-EDISON# TLM-A06-LED-480-T4-BZ-MA1014-BZ OR EQUAL	MCGRRAW-EDISON# TLM-250-MP-480-25-FG-BZ-MA1014-BZ OR EQUAL
D	POLE MOUNT SHOE BOX FIXTURE, TYPE II DISTRIBUTION, TEMPERED GLASS LENS, 480V BALLAST, BRONZE FINISH, 2 HEADS @ 90°	25' HIGH, ROUND STRAIGHT STEEL, CROSS SECTION AND WALL THICKNESS TO SUIT LUMINAIRE EPA AT 100 MPH WIND	MCGRRAW-EDISON# TLM-A06-LED-480-T2-BZ-MA1014-BZ OR EQUAL	MCGRRAW-EDISON# TLM-250-MP-480-25-FG-BZ-MA1014-BZ OR EQUAL
E	POLE MOUNT SHOE BOX FIXTURE, TYPE II DISTRIBUTION, TEMPERED GLASS LENS, 208V BALLAST, BRONZE FINISH, 1 HEAD	25' HIGH, ROUND STRAIGHT STEEL, CROSS SECTION AND WALL THICKNESS TO SUIT LUMINAIRE EPA AT 100 MPH WIND	MCGRRAW-EDISON# TLM-A06-LED-E1-T2-BZ-MA1010-BZ OR EQUAL	MCGRRAW-EDISON# TLM-250-MP-208-25-FG-BZ-MA1010-BZ OR EQUAL
F	POLE MOUNT SHOE BOX FIXTURE, TYPE IV DISTRIBUTION, TEMPERED GLASS LENS, 208V BALLAST, BRONZE FINISH, 2 HEADS @ 90°	25' HIGH, ROUND STRAIGHT STEEL, CROSS SECTION AND WALL THICKNESS TO SUIT LUMINAIRE EPA AT 100 MPH WIND	MCGRRAW-EDISON# TLM-A06-LED-E1-T4-BZ-MA1014-BZ OR EQUAL	MCGRRAW-EDISON# TLM-250-MP-208-25-FG-BZ-MA1014-BZ OR EQUAL
G	POLE MOUNT SHOE BOX FIXTURE, TYPE V DISTRIBUTION, TEMPERED GLASS LENS, 208V BALLAST, BRONZE FINISH, 2 HEADS @ 180°	25' HIGH, ROUND STRAIGHT STEEL, CROSS SECTION AND WALL THICKNESS TO SUIT LUMINAIRE EPA AT 100 MPH WIND	MCGRRAW-EDISON# TLM-A06-LED-E1-5WQ-BZ-MA1011-BZ OR EQUAL	MCGRRAW-EDISON# TLM-250-MP-208-55-FG-BZ-MA1011-BZ OR EQUAL
H	POLE MOUNT SHOE BOX FIXTURE, TYPE IV DISTRIBUTION, TEMPERED GLASS LENS, 120V BALLAST, BRONZE FINISH, 1 HEAD	15' HIGH, ROUND STRAIGHT STEEL, CROSS SECTION AND WALL THICKNESS TO SUIT LUMINAIRE EPA AT 100 MPH WIND	MCGRRAW-EDISON# TLM-A02-LED-E1-T4-BZ-HS-MA1010-BZ OR EQUAL	MCGRRAW-EDISON# TLM-100-MP-120-45-FG-BZ-HS-MA1010-BZ OR EQUAL
SC	SURFACE MOUNTED SQUARE CANOPY FIXTURE, POLYCARBONATE VANDAL RESISTANCE PRISMATIC REFLECTOR, GASKETED AND WET LISTED, 120V ELECTRONIC BALLAST	SURFACE MOUNTED TO CANOPY	MCGRRAW-EDISON# CNC-A01-LED-E1-SQ-BZ OR EQUAL	FAIL-SAFE# FB-P-226-120-EBT2 OR EQUAL
SP1	GROUND MOUNTED 70W METAL HALIDE FLOOD LIGHT, DARK BRONZE FINISH, TEMPERED GLASS LENS, TOP & SIDE VISORS ALIGN VERTICALLY AND AIM AT CENTERLINE OF SIGN	STANCHION MOUNTED IN A 1'-0" DIAMETER, 2'-0" DEEP CONCRETE BASE	MCGRRAW-EDISON# AGF-F-70-MH-480-65-BZ TV/AS-BZ, SV/AS-BZ OR EQUAL	
SP2	GROUND MOUNTED 400W METAL HALIDE FLOOD LIGHT, DARK BRONZE FINISH, TEMPERED GLASS LENS, TOP & SIDE VISORS ALIGN VERTICALLY AND AIM AT CENTERLINE OF FLAG POLE	STANCHION MOUNTED IN A 1'-0" DIAMETER, 2'-0" DEEP CONCRETE BASE	MCGRRAW-EDISON# AMF-F-400-MH-480-62-BZ, TV/AS-BZ, SV/AS-BZ OR EQUAL	

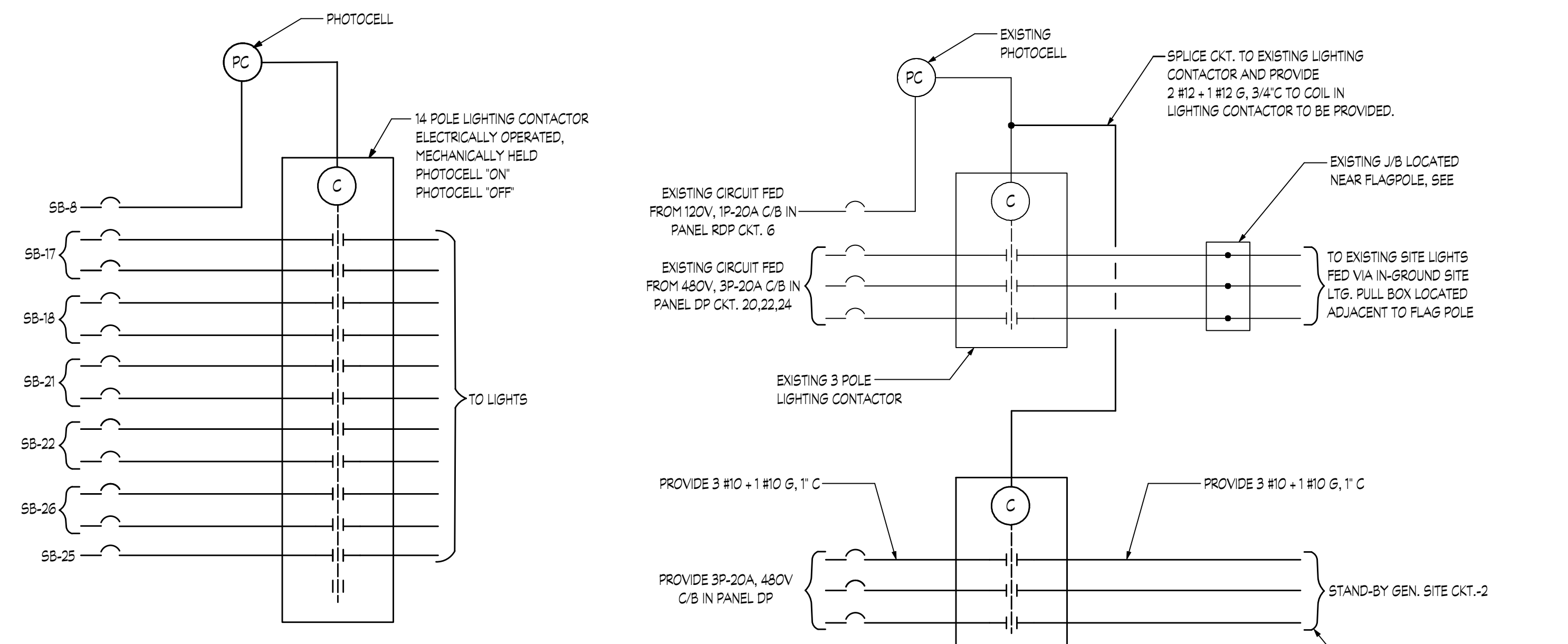
NOTES:
 A-A
 BASE TYPE



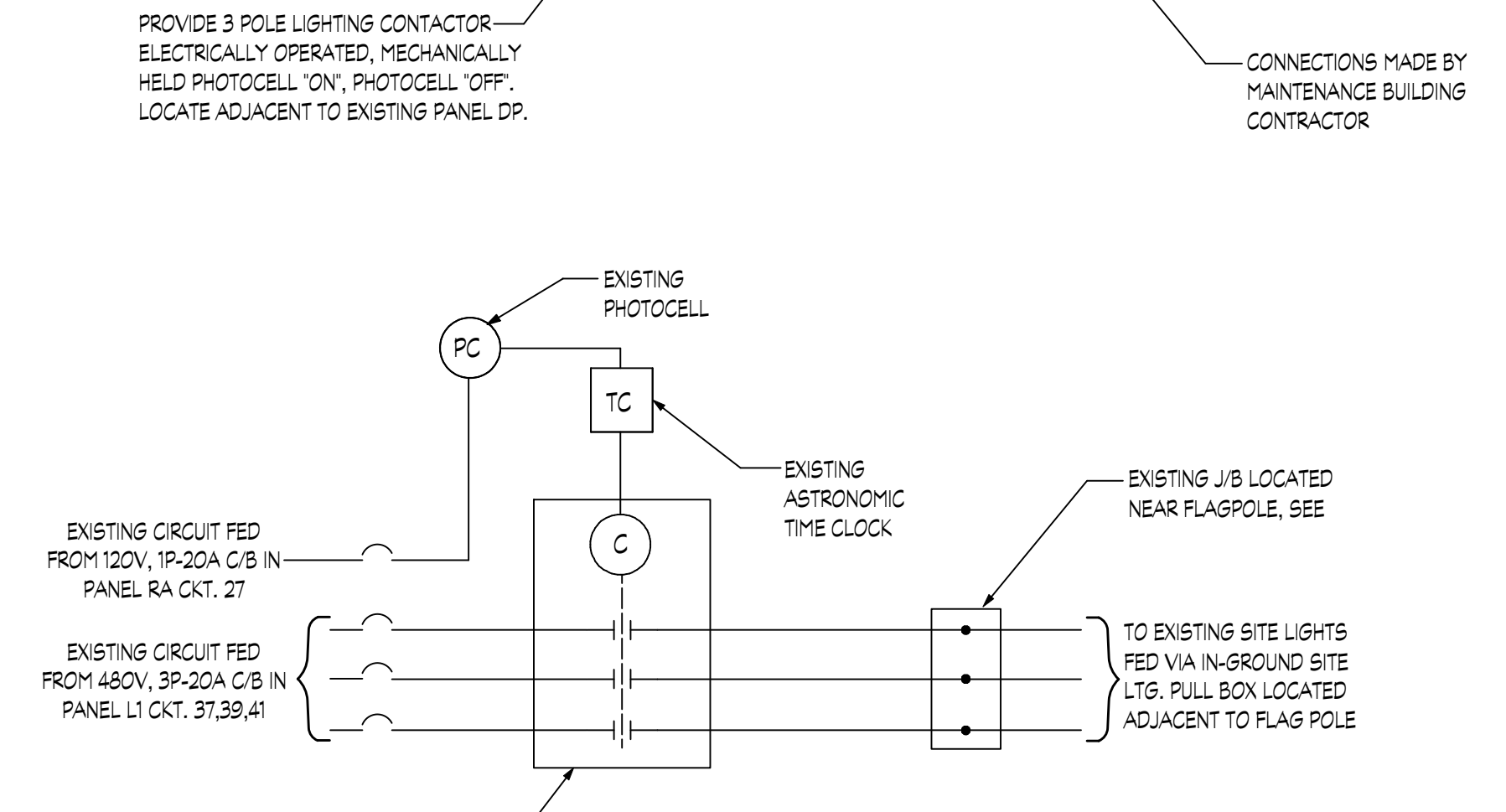
LIGHT POLE BASE TYPE 'A' DETAIL
NOT TO SCALE



LIGHT POLE BASE TYPE 'B' DETAIL
NOT TO SCALE



MAINTENANCE BLDG. SITE LIGHTING CONTROL DIAGRAM
SCALE: NONE



OFFICE BLDG. SITE LIGHTING CONTROL DIAGRAM
SCALE: NONE

GENERAL NOTES
1. COORDINATE PHOTOCELL, TIME CLOCK AND LIGHTING CONTACTOR PANELS WITH OFFICE BUILDING OWNER/CONTRACTOR.

DRAWINGS E100, E101, E300, E301, E302 ARE PART OF 2 BID PACKAGES/PROJECTS. THOSE PROJECTS ARE THE "TCC/SHORE TRANSIT MAINTENANCE FACILITY" FUNDED BY MTA AND THE "CAREER CENTER SITE IMPROVEMENTS PROJECT" FUNDED BY EDA & USDA. CONTRACTOR SHALL REFER TO MATCH LINES AND NOTES FOR APPLICABLE SCOPE. REMAINING INFORMATION IS FOR REFERENCE.