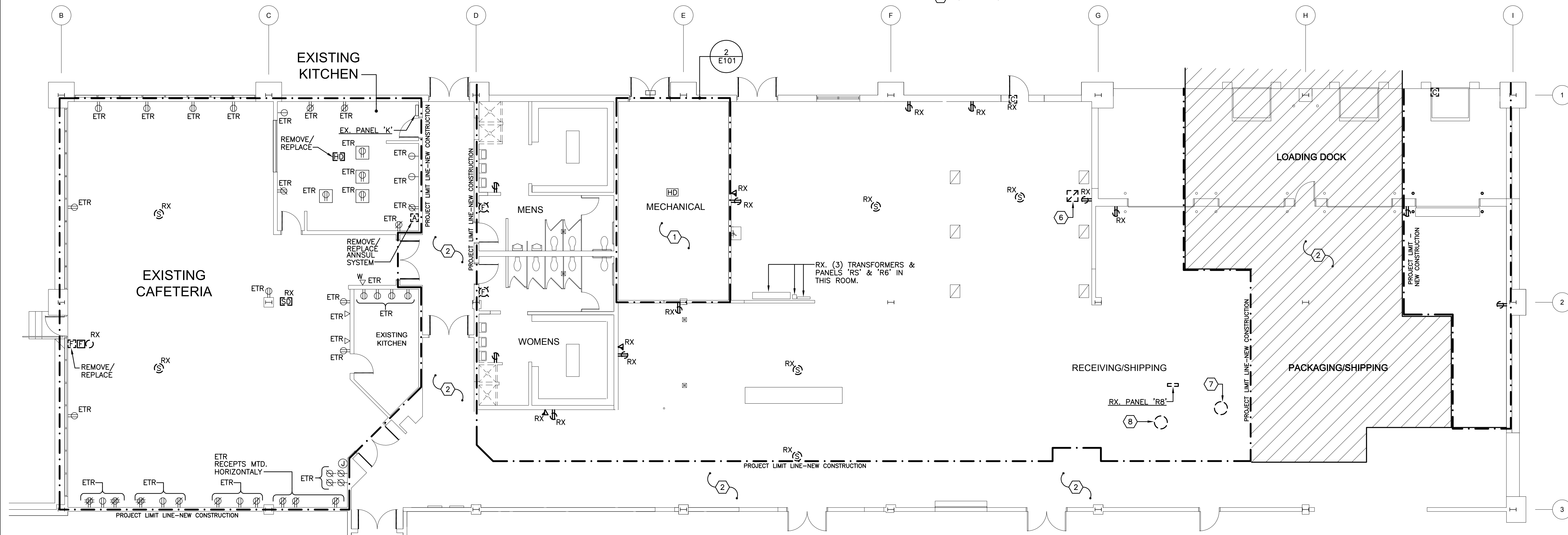
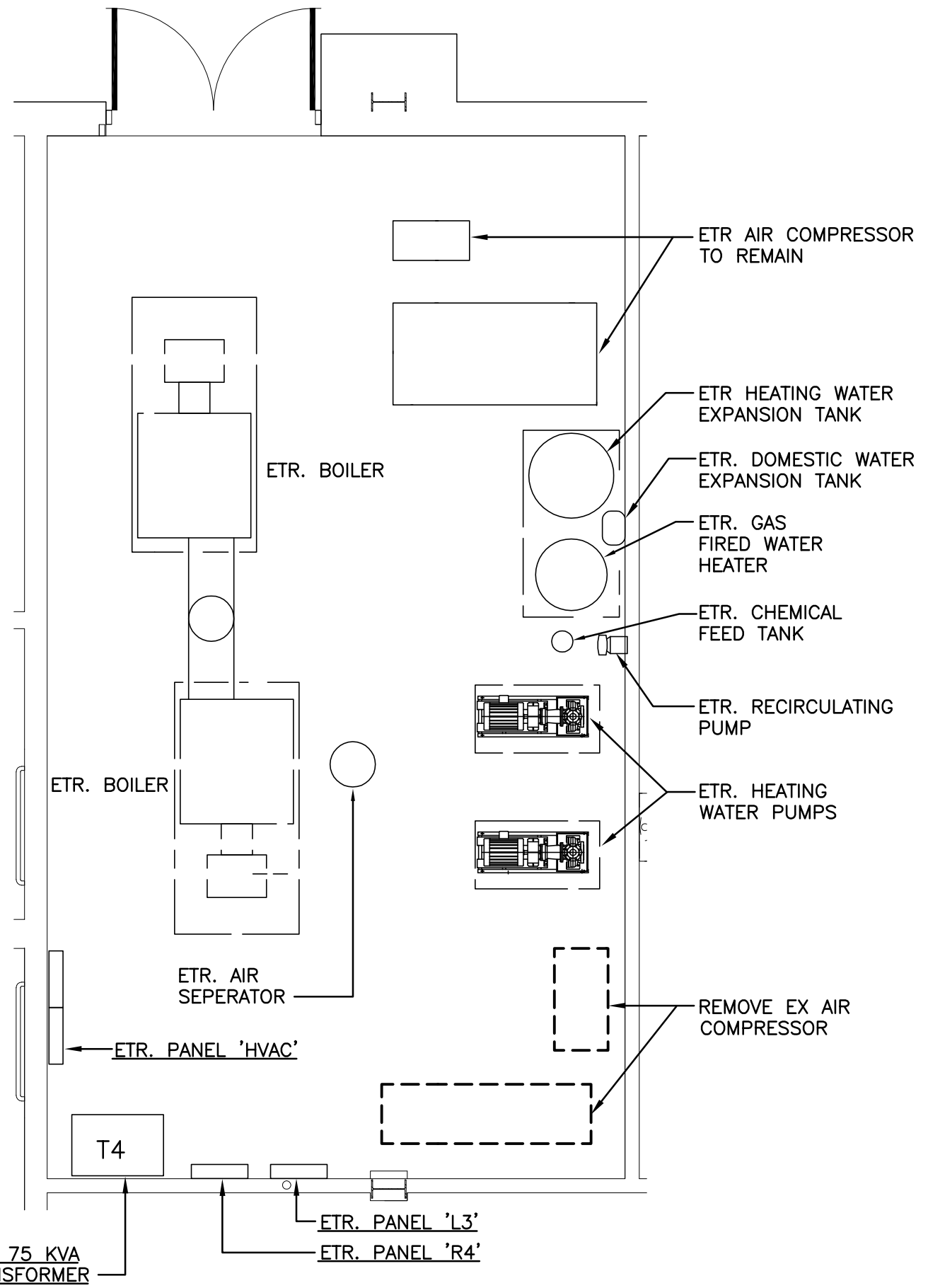


**SPECIFIC NOTES (APPLY TO DRAWING E101 WHERE INDICATED):**

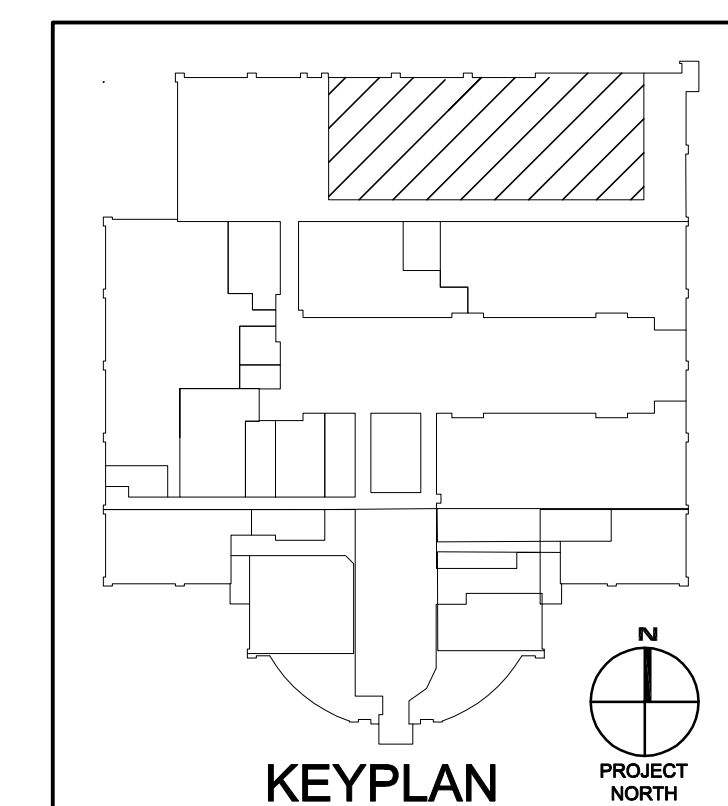
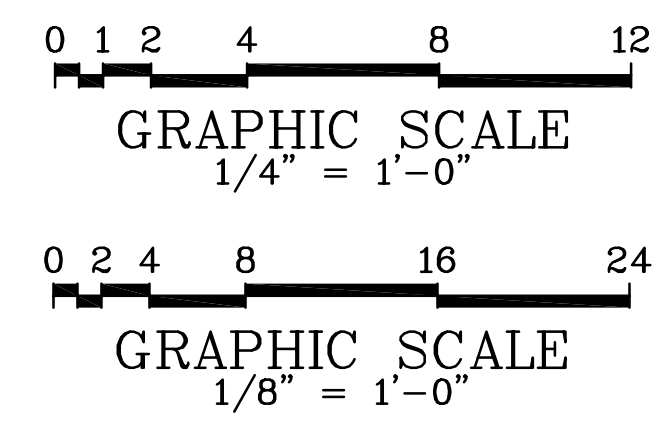
- ① THIS AREA IS EXISTING TO REMAIN.
- ② DEMOLITION IN THIS AREA PROVIDED UNDER SEPARATE CONTRACT.
- ③ (NOT USED).
- ④ (NOT USED).
- ⑤ (NOT USED).
- ⑥ REMOVE EXISTING EXHAUST FAN AND ASSOCIATED WIRING AND CONDUIT.
- ⑦ REMOVE EXISTING ULH AND ASSOCIATED WIRING AND CONDUIT.
- ⑧ REMOVE EXISTING UH-1 AND ASSOCIATED WIRING AND CONDUIT.



**1 FLOOR PLAN - POWER AND SPECIAL SYSTEMS DEMOLITION**  
SCALE: 1/8" = 1'-0"



**2 PART PLAN - MECHANICAL ROOM**  
SCALE: 1/8" = 1'-0"



ARCHITECTURE  
ENGINEERING

Dover, DE  
309 S Governors Ave  
Dover, DE 19904  
302.734.7950

Salisbury, MD  
312 West Main St. Suite 300  
Salisbury, MD 21801  
410.546.9100

Wilmington, NC  
3205 Randall Parkway, Suite 211  
Wilmington, NC 28403  
910.341.7600

www.beckermorgan.com

**SP**

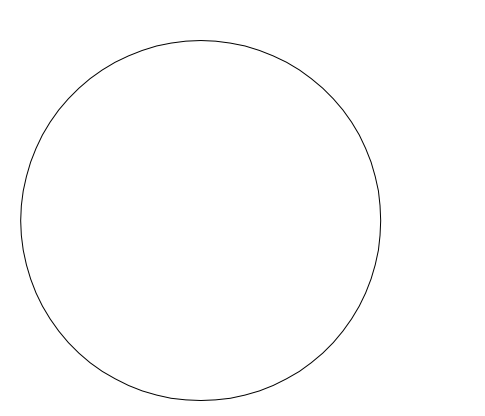
SCHLENGER/PITZ  
& ASSOCIATES, INC.  
Consulting Engineers

15 West Ayresbury Road, Timonium, MD 21083  
Phone 410.561.1337 Fax 410.561.1446

7 Oak Farm Lane, Shrewsbury, PA 17361  
Phone 717.227.2320 Fax 717.227.9916

4 North Main Street, Salisbury, DE 19875  
Phone 302.436.2733 Fax 302.436.5211

www.speengineers.com © Copyright 2010



"Professional Certification. I hereby certify that these documents were prepared or approved by me, and that I am a duly licensed professional engineer under the laws of the state of Maryland, License No. 16961, Expiration Date: 2012-06-14."

PROJECT TITLE

**TCC/SHORE TRANSIT EXISTING BUILDING**

31901 TRI-COUNTY WAY  
SALISBURY, MD 21804

ISSUED FOR BIDDING ONLY

DATE: 03/29/11

SHEET TITLE

**FLOOR PLAN POWER AND SPECIAL SYSTEMS DEMOLITION**

KEY PLAN

MARK	DATE	DESCRIPTION
	03/29/11	ISSUED FOR BIDDING
	2/1/2011	ISSUED FOR BIDDING

PROJECT NO: 2009145.00  
DATE: 03/29/11  
SCALE:  
DRAWN BY: MH PROJ MGR: DAS

**E101**