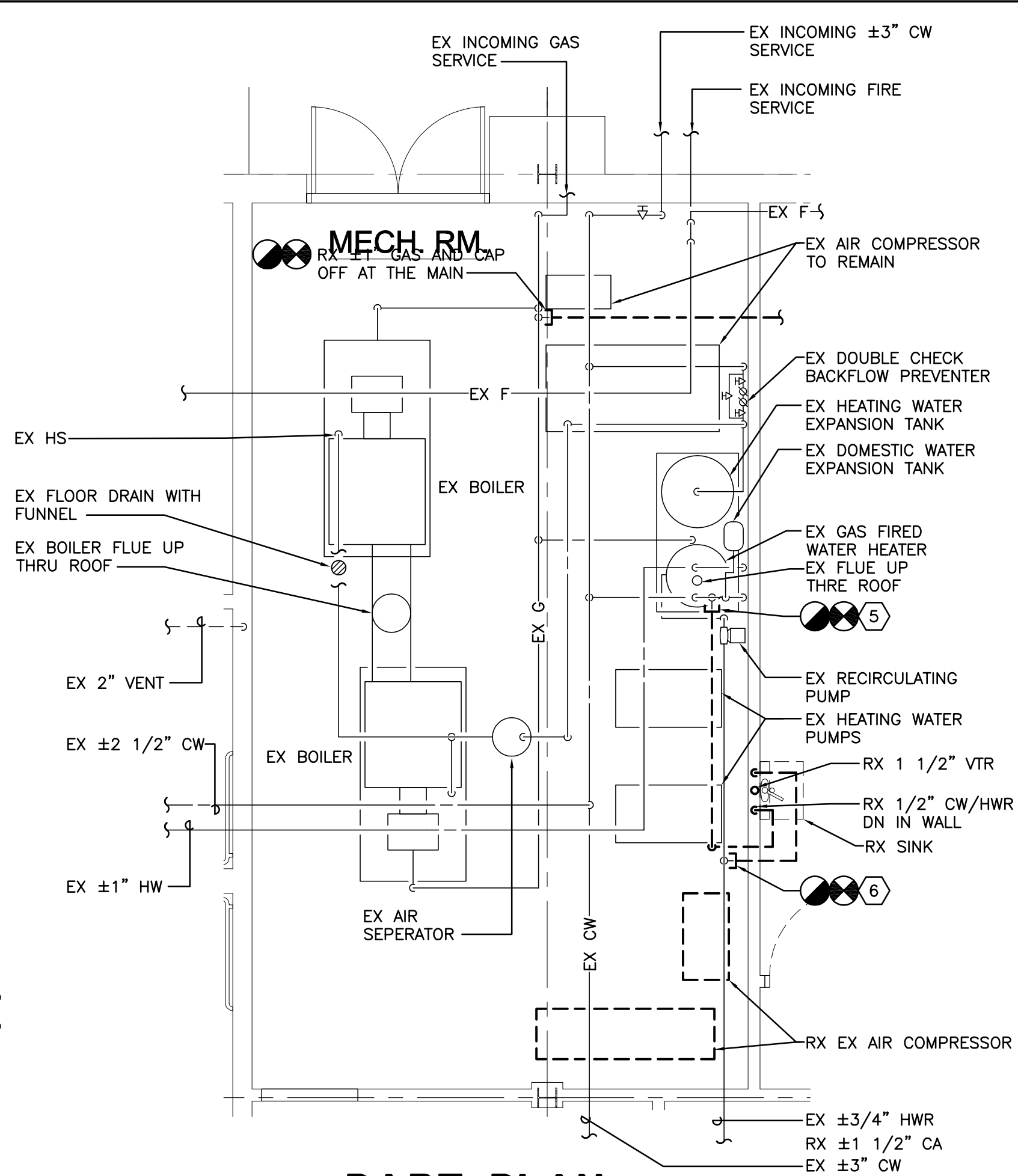


2 PART PLAN - MEN'S LOCKER ROOM
SCALE: 1/4" = 1'-0"

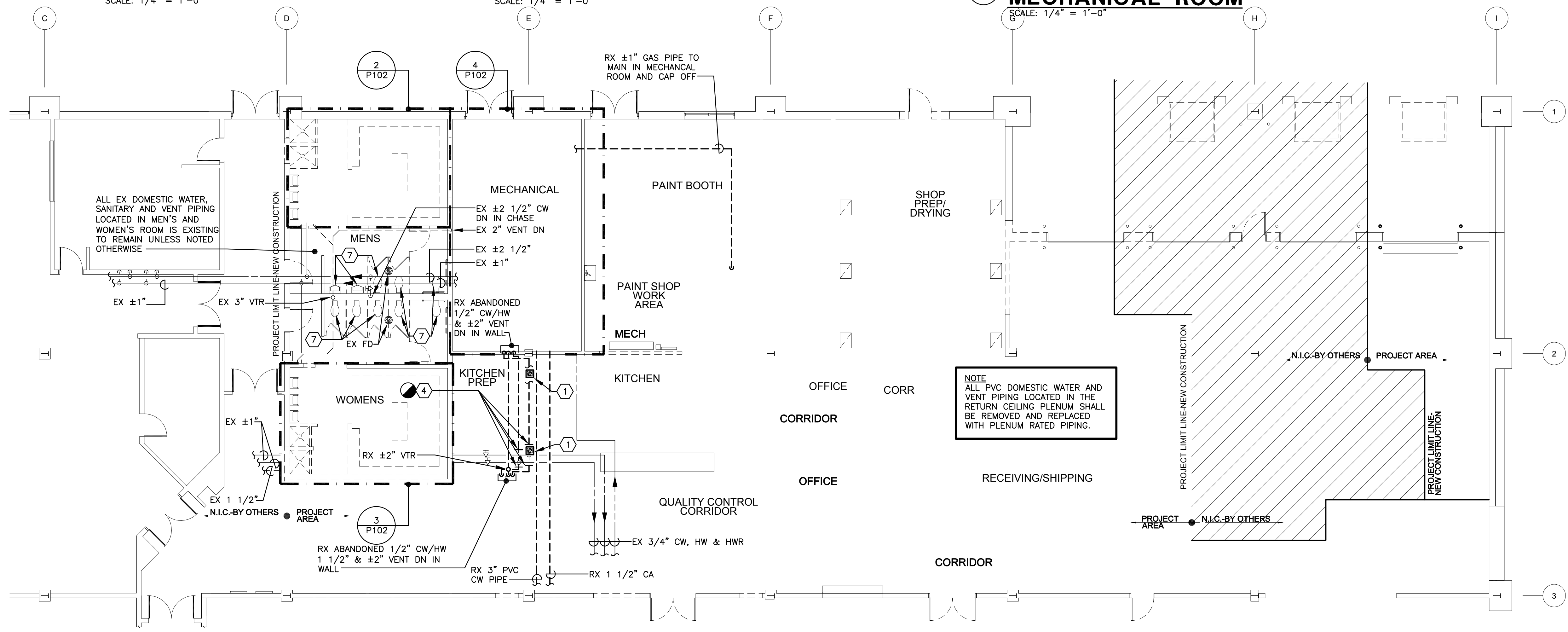
3 PART PLAN - WOMEN'S LOCKER ROOM
SCALE: 1/4" = 1'-0"



4 PART PLAN - MECHANICAL ROOM
SCALE: 1/4" = 1'-0"

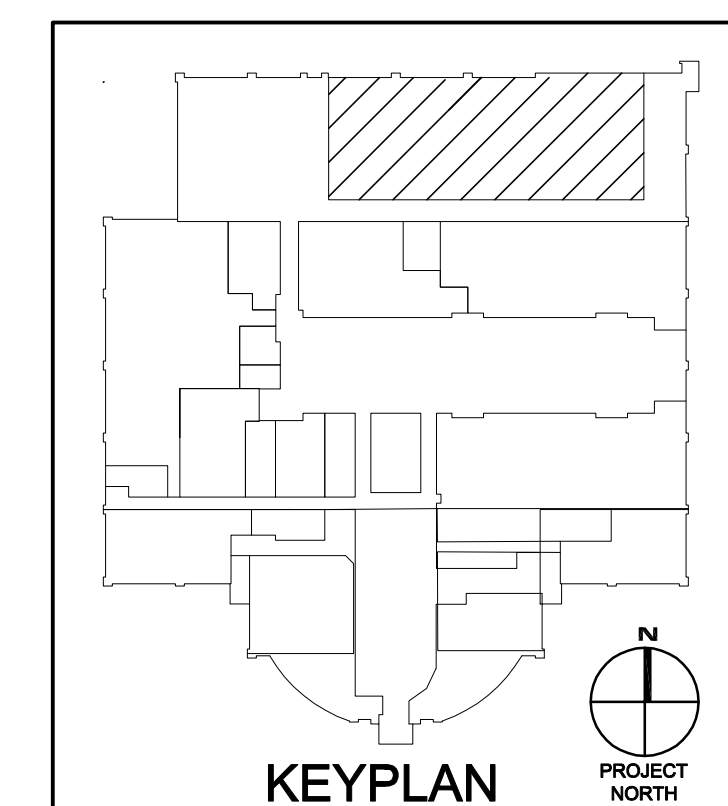
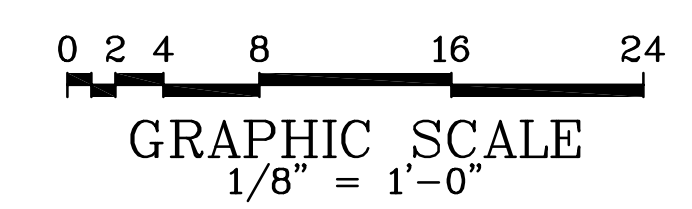
SPECIFIC NOTES: (APPLY TO DRAWING P101 WHERE INDICATED)

- 1 REMOVE EXISTING FLOOR DRAIN AND PATCH FLOOR TO MATCH EXISTING FLOOR.
- 2 REMOVE EXISTING 1/2" CW/HW DOWN IN WALL AND CAP OFF ABOVE CEILING.
- 3 REMOVE EXISTING ± 1 1/2" VENT DOWN IN WALL AND CAP OFF ABOVE CEILING.
- 4 REMOVE EXISTING 1/2" CW/HW AND CAP OFF ABOVE CEILING.
- 5 REMOVE EXISTING 1/2" CW AND CAP OFF.
- 6 REMOVE EXISTING 1/2" HWR AND CAP OFF.
- 7 REMOVE EXISTING WATER CLOSET/URINAL.



FLOOR PLAN - PLUMBING - DEMOLITION
SCALE: 1/8" = 1'-0"

NOTE
ALL PVC DOMESTIC WATER AND VENT PIPING LOCATED IN THE RETURN CEILING PLENUM SHALL BE REMOVED AND REPLACED WITH PLENUM RATED PIPING.



BECKER MORGAN GROUP
ARCHITECTURE ENGINEERING
Dover, DE
309 S Governors Ave
Dover, DE 19904
302.734.7950
Salisbury, MD
312 West Main St. Suite 300
Salisbury, MD 21801
410.546.9100
Wilmington, NC
3205 Randall Parkway, Suite 211
Wilmington, NC 28403
910.341.7600
www.beckermorgan.com

SCHLENGER/FITZ & ASSOCIATES, INC.
Consulting Engineers
15 West Aylesbury Road, Timonium, MD 21083
Phone 410.561.1337 Fax 410.561.1446
7 Old Farm Lane, Sharpsburg, PA 17361
Phone 717.227.2320 Fax 717.227.9916
4 North Main Street, Salisbury, DE 19375
Phone 302.436.2733 Fax 302.436.5211
www.speengineers.com © Copyright 2010

"Professional Certification. I hereby certify that these documents were prepared or approved by me, and that I am a duly licensed professional engineer under the laws of the state of Maryland, License No. 16961, Expiration Date: 2012-06-14."

TCC/SHORE TRANSIT EXISTING BUILDING
31901 TRI-COUNTY WAY
SALISBURY, MD 21804
ISSUED FOR BIDDING ONLY
DATE: 03/29/11

SHEET TITLE
FLOOR PLAN - PLUMBING - DEMOLITION

KEY PLAN

MARK	DATE	DESCRIPTION
	03/29/11	ISSUED FOR BIDDING
	2/1/2011	ISSUED FOR BIDDING
PROJECT NO: 2009145.00		
DATE: 03/29/11		
SCALE:		
DRAWN BY: MRW PROJ MGR: TRC		

P101