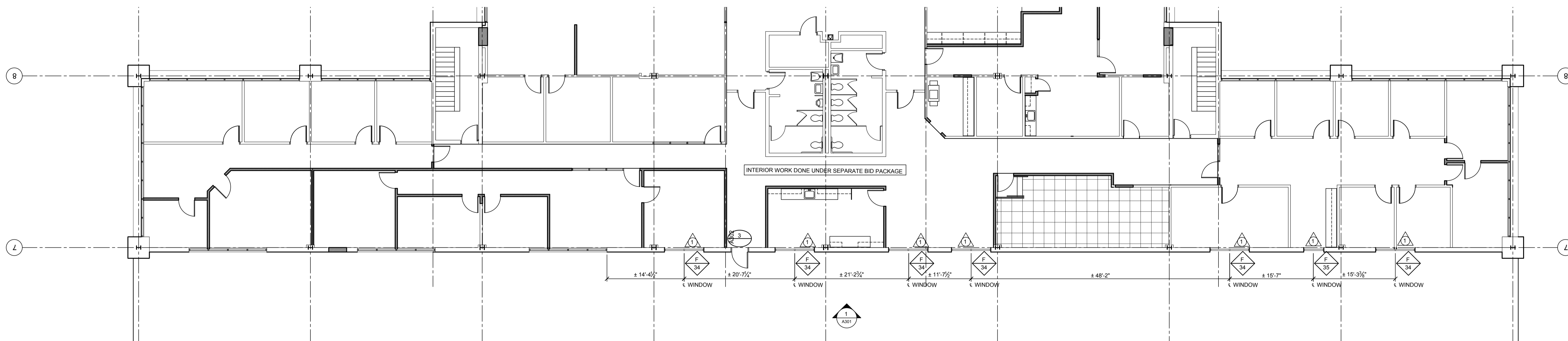
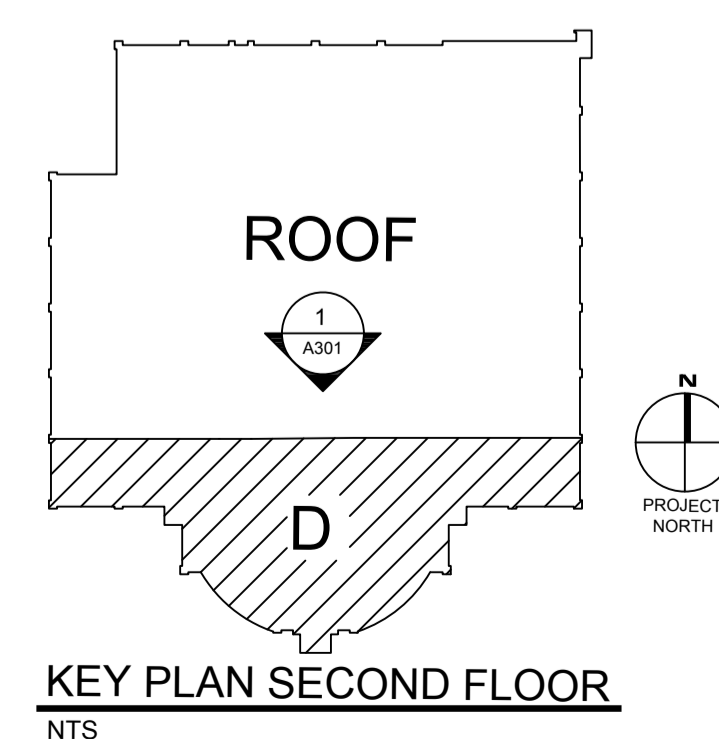


1 EXISTING SECOND FLOOR NORTH ELEVATION
SCALE: 1/8" = 1'-0"



2 PARTIAL SECOND FLOOR PLAN - AREA "D"
SCALE: 1/8" = 1'-0"

RENOVATIONS	
①	NEW WINDOW - MATCH EXISTING SILL AND HEAD HEIGHT.
②	EXPANSION JOINT - REFER TO EXPANSION JOINT DETAIL.
③	SEAMLESS ALUMINUM GUTTER AND DOWN SPOUT SYSTEM.
④	NEW BRICK PILASTER CAP - REFER TO CAP DETAIL.
⑤	NEW CONCRETE SPLASH BLOCK WITH WALK PAD BENEATH THE SPLASH BLOCK.
⑥	REMOVE, RECONDITION, TO LIKE NEW AND REINSTALL EXISTING ROOF LADDER.



KEY PLAN SECOND FLOOR
NTS

REVISIONS					
NO.	DATE	REMARKS	NO.	DATE	REMARKS

I CERTIFY THAT THESE DRAWINGS OR APPROVED BY ME AS A SEALY REGISTERED PROFESSIONAL ENGINEER IN THE STATE OF MARYLAND.
KERRY W. DOLAN, P.E. REG. NO. 2077
EXPIRES 12/31/2012

ARCHITECTURE
ENGINEERING
INCORPORATED
IOETT
310 HAMMOND ST. SUITE 109 SALISBURY, MARYLAND
(410) 749-7229 • FAX (410) 749-0001

TRI - COUNTY MULTI-PURPOSE CENTER
BUILDING ENVELOPE AND
INTERIOR RENOVATION
SALISBURY, MARYLAND
PROPOSED NORTH 2ND FLOOR ELEVATION AND PLAN

PRINT DATE: 11.1.2010
IOTT PROJ. NO.: 09-035
DESIGN BY: JT
DRAWN BY: JT
SCALE: AS NOTED
STAGE: ISSUED FOR BID
DWG. FILE: 09-035-A301

A
301