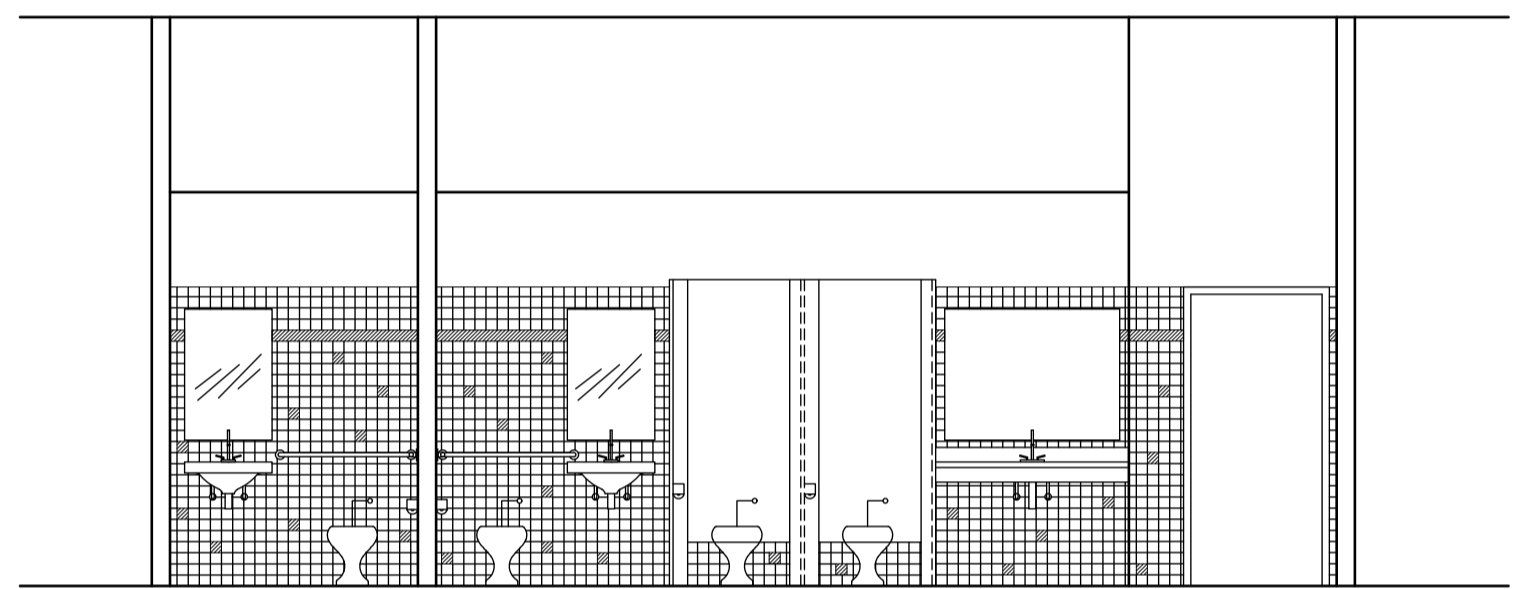
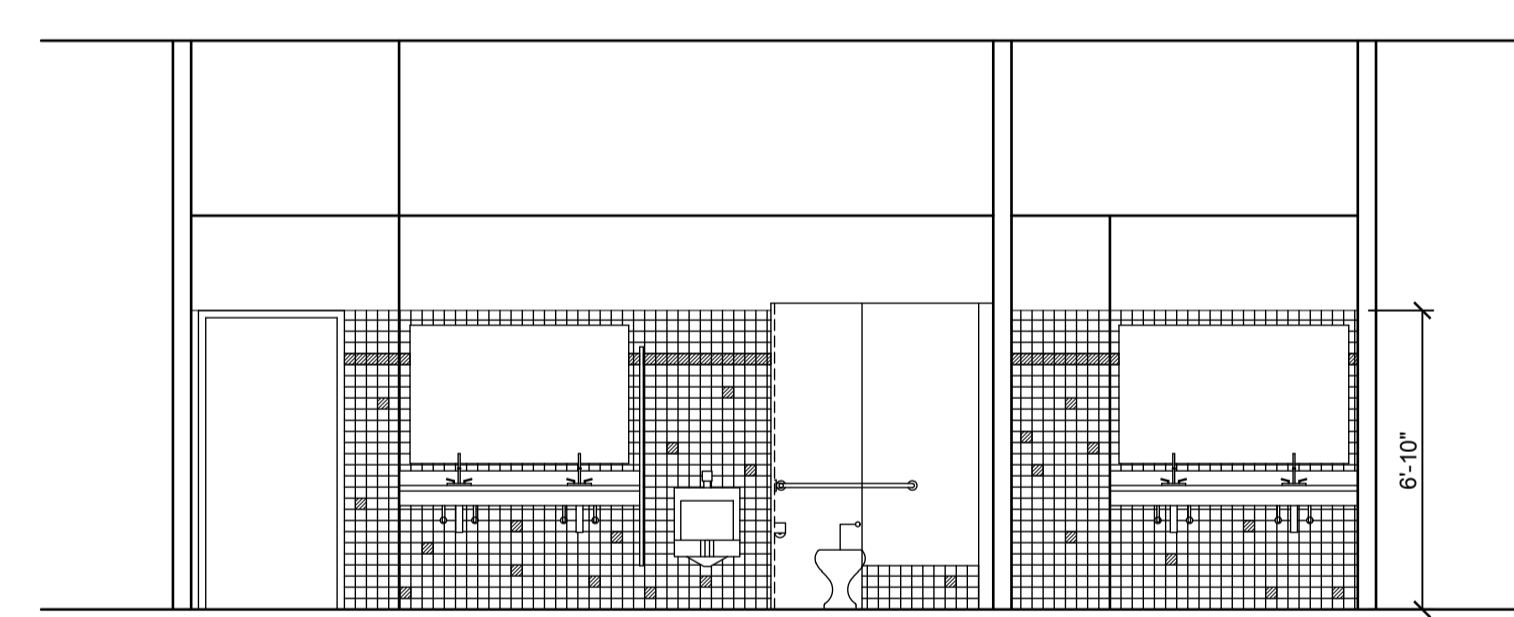


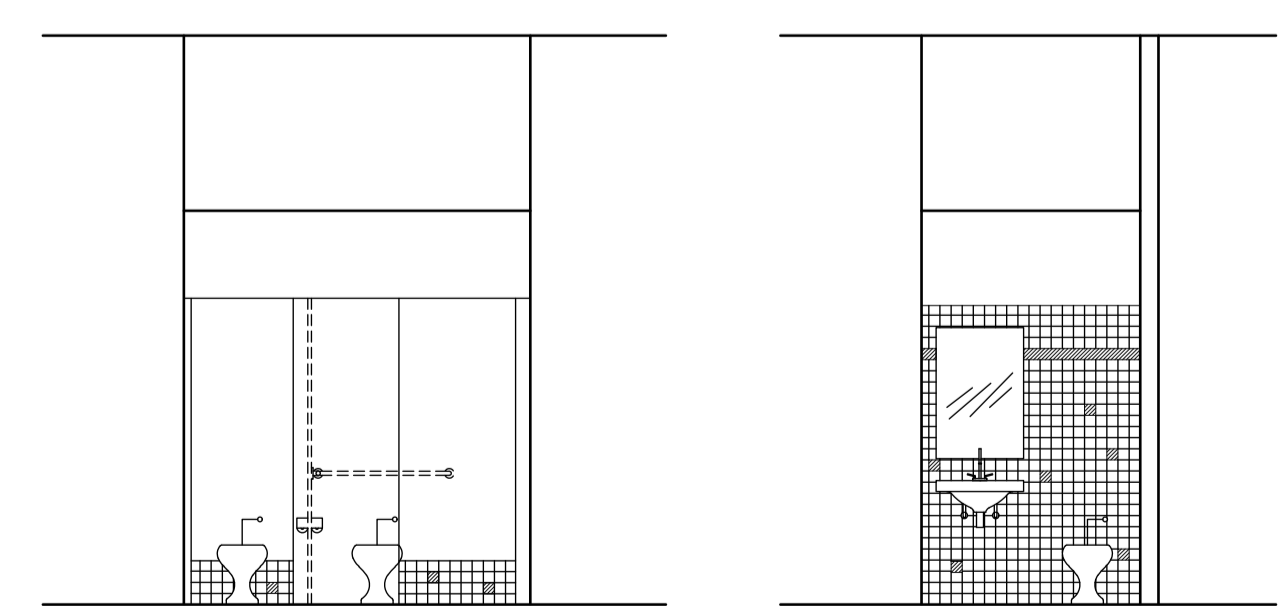
1 LARGE SCALE FLOOR PLAN
SCALE: 1/4" = 1'-0"



2 INTERIOR ELEVATION
SCALE: 1/4" = 1'-0"



3 INTERIOR ELEVATION
SCALE: 1/4" = 1'-0"

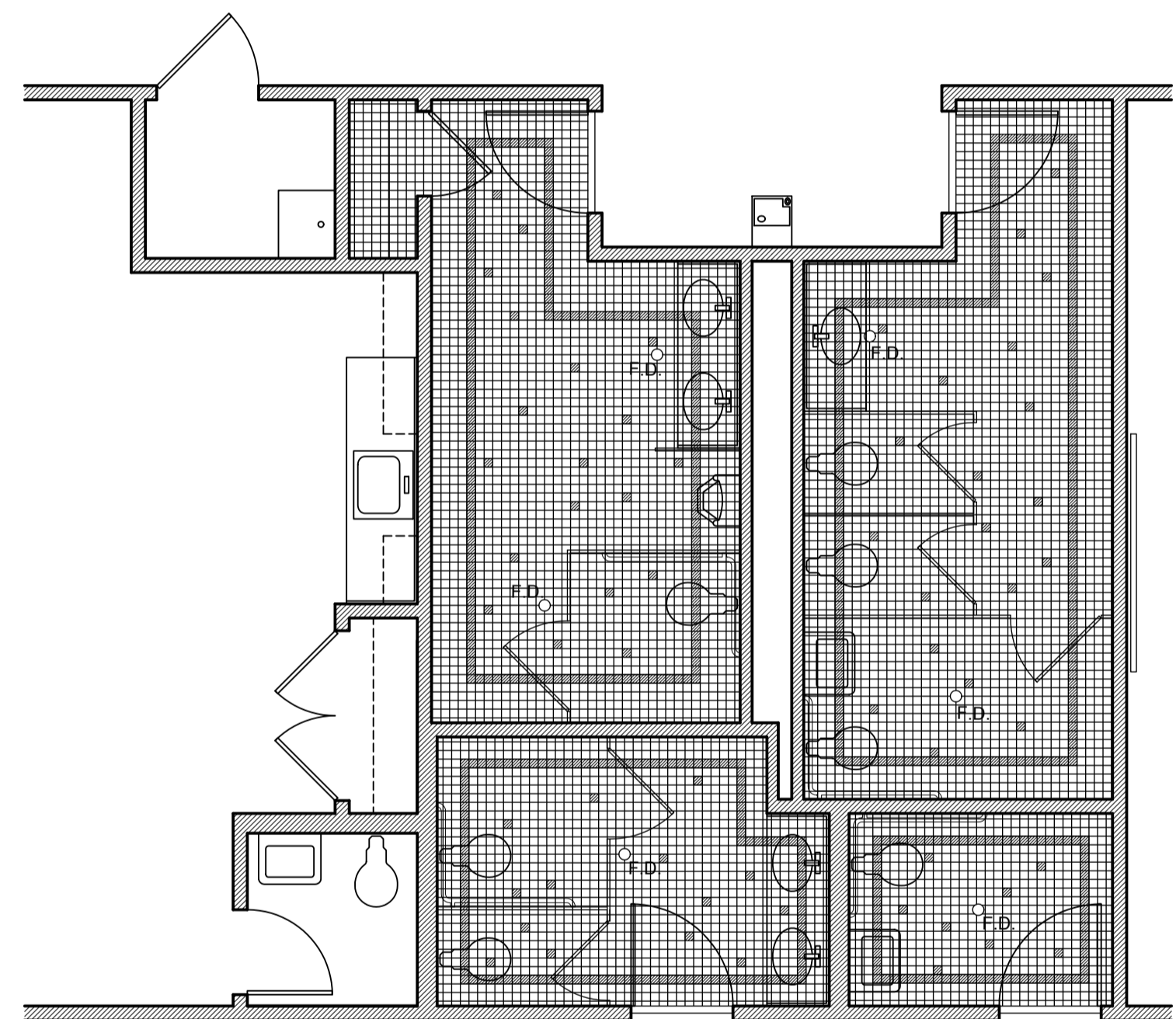


4 INTERIOR ELEVATION
SCALE: 1/4" = 1'-0"

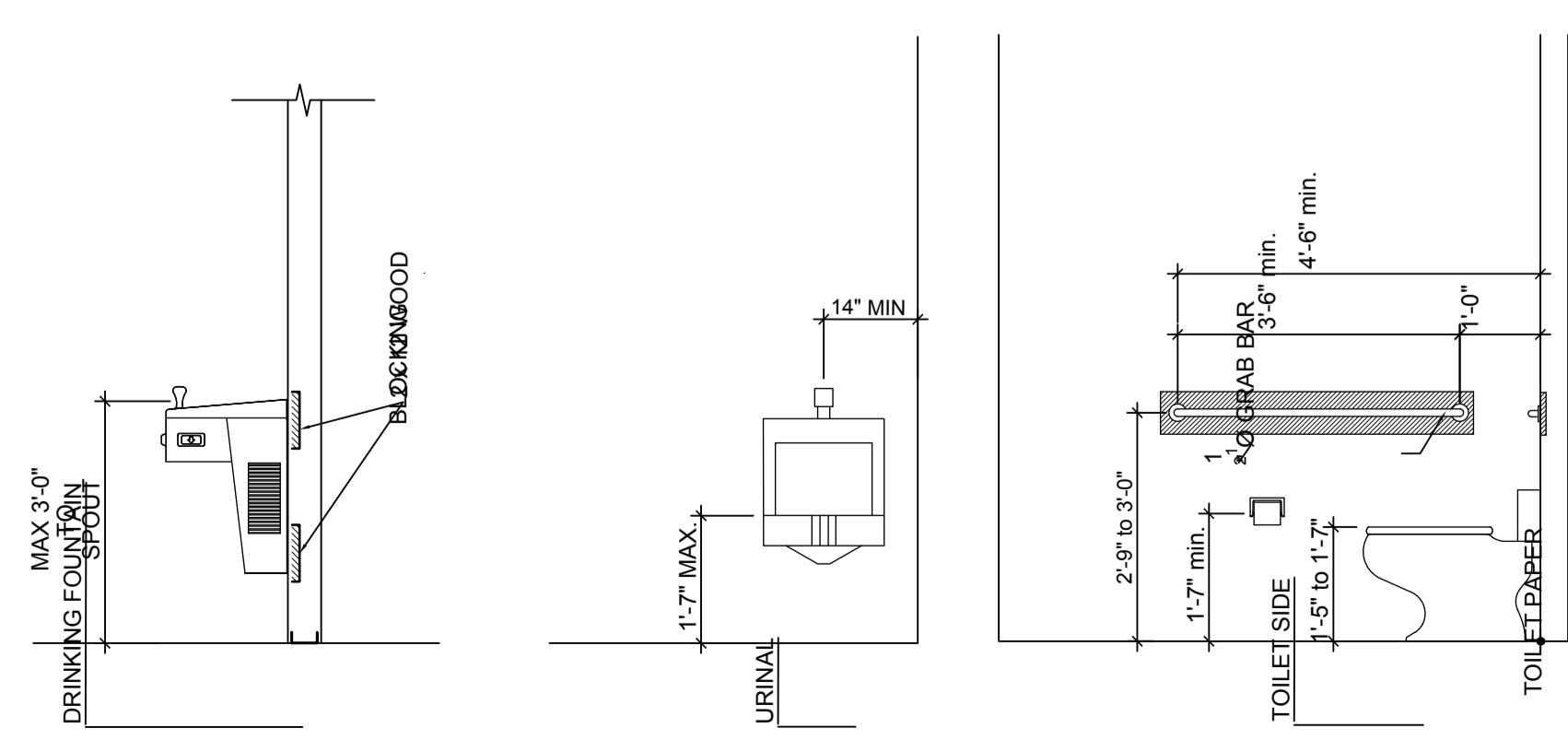
5 INTERIOR ELEVATION
SCALE: XX" = 1'-0"

TOILET ACCESSORIES LEGEND			
ACCESSORY	BOBRICK #	MOUNTING HEIGHT	
1 MULTI-ROLL TOILET TISSUE DISPENSER	B-4388	28" A.F.F. TO T.O. DISPENSER	
2 SURFACE MOUNTED TWIN JUMBO-ROLL TOILET TISSUE DISPENSER	B-2892	30" A.F.F. TO T.O. DISPENSER	
3 SURFACE MOUNTED PAPER TOWEL DISPENSER	B-4262	38" A.F.F. TO B.O. DISPENSER	
4 RECESSED HAND DRYER	B-750	48" A.F.F. TO B.O. HAND DRYER MOUNTING BASE	
5 SURFACE MOUNTED SANITARY NAPKIN DISPENSER	B-270	30" A.F.F. TOP OF LID	
6 1 1/2" Ø STAINLESS STEEL GRAB BAR	B-6806-36	36" A.F.F.	
7 1 1/2" Ø STAINLESS STEEL GRAB BAR	B-6806-42	36" A.F.F.	
8 LAVATORY MOUNTED SOAP DISPENSER	B-822	-	
9 SURFACE MOUNTED SOAP DISPENSER	B-2111	40" A.F.F. B.O. DISPENSER	
10 RECESSED NAPKIN / TAMPON VENDORS	B-3500	38" TO COIN INSERT	
11 HORIZONTAL WALL-MOUNTED BABY CHANGING STATION	KB200-00	33" A.F.F.	
12 MIRROR WITH STAINLESS STEEL ANGLE FRAME	B-2908-4836	40" A.F.F. B.O. FRAME	
13 MIRROR WITH STAINLESS STEEL ANGLE FRAME	B-2906-6036	40" A.F.F. B.O. FRAME	
14 MIRROR WITH STAINLESS STEEL ANGLE FRAME	B-2906-1836	40" A.F.F. B.O. FRAME	
15 COAT HOOK WITH BUMPER	B-212	40" A.F.F. TO CENTER OF BUMPER	
16 UTILITY SHELF WITH MOP / BROOM HOLDERS AND RAG HOOKS	B-239	48" A.F.F. TOP OF SHELF	

NOTE: DESIGN BASED ON BOBRICK PRODUCTS



6 TILE PATTERN
SCALE: 1/4" = 1'-0"



ADA ADAPTABILITY STANDARD DETAIL
SCALE: 1/2" = 1'-0"

<p>NOTE: • EXISTING WALL - FEILD VERIFY</p>	<p>NOTE: • EXTEND TO UNDERSIDE OF STRUCTURE • MOISTURE RESISTANT GYPSUM IN WET AREAS</p>	<p>NOTE: • 6\"/> </p>
WALL TYPE - A	WALL TYPE - B & B.1	WALL TYPE - C
<p>NOTE: • EXTEND TO UNDERSIDE OF STRUCTURE • MOISTURE RESISTANT GYPSUM IN WET AREAS</p>	<p>NOTE: • 6\"/> </p>	<p>NOTE: • EXTEND TO UNDERSIDE OF STRUCTURE • MOISTURE RESISTANT GYPSUM IN WET AREAS</p>
WALL TYPE - D & D.1 (RATED WALL)	WALL TYPE - E	WALL TYPE - F
<p>NOTE: • WALL HEIGHT 5'-0\"/> </p>	<p>NOTE: • MATCH ADJACENT EXISTING WALL TYPE</p>	<p>NOTE: • EXTEND TO UNDERSIDE OF STRUCTURE • MOISTURE RESISTANT GYPSUM IN WET AREAS</p>
WALL TYPE - G	WALL TYPE - H	WALL TYPE - J
WALL TYPE - K	WALL TYPE - L	WALL TYPE - M
	<p>NOTES:</p> <ol style="list-style-type: none"> CONTRACTOR TO REFER TO U.L. HANDBOOK, LATEST EDITION, FOR PROPER CONSTRUCTION AND COMPLIANCE WITH RATED WALL, CEILING AND FLOOR ASSEMBLIES. ALL PENETRATIONS THROUGH FIRE RATED WALLS, FLOORS, OR CEILINGS SHALL BE SEALED WITH FIRESTOP WHICH MEETS THE APPROVAL OF THE GOVERNING INSPECTION AGENCY. ALL RATED WALLS SHALL EXTEND TO UNDERSIDE OF STRUCTURE. 	
WALL TYPE - N	<p>WALL TYPE TAG</p>	

REVISIONS		
NO.	DATE	REMARKS

REVISIONS		
NO.	DATE	REMARKS

I CERTIFY THAT THESE DRAWINGS OR ANY PART THEREOF HAVE BEEN PREPARED BY A LICENSED ARCHITECT OR ENGINEER UNDER THE LAWS OF THE STATE OF MARYLAND.

ARCHITECTURE ENGINEERING INCORPORATED
310 HAMMOND ST. SUITE 109 SALISBURY, MARYLAND
(410) 749-7229 • FAX (410) 749-0001

ARCHITECTURE ENGINEERING INCORPORATED
IOTT
310 HAMMOND ST. SUITE 109 SALISBURY, MARYLAND
(410) 749-7229 • FAX (410) 749-0001

TRI - COUNTY MULTI-PURPOSE CENTER
BUILDING ENVELOPE AND INTERIOR RENOVATION
SALISBURY, MARYLAND
WALL TYPES AND TYPICAL DETAILS

PRINT DATE: 11.1.2010
IOTT PROJ. NO.: 09-035
DESIGN BY: KI
DRAWN BY: JT
SCALE: AS NOTED
STAGE: ISSUED FOR BID
DWG. FILE: 09-035-A600

A 600