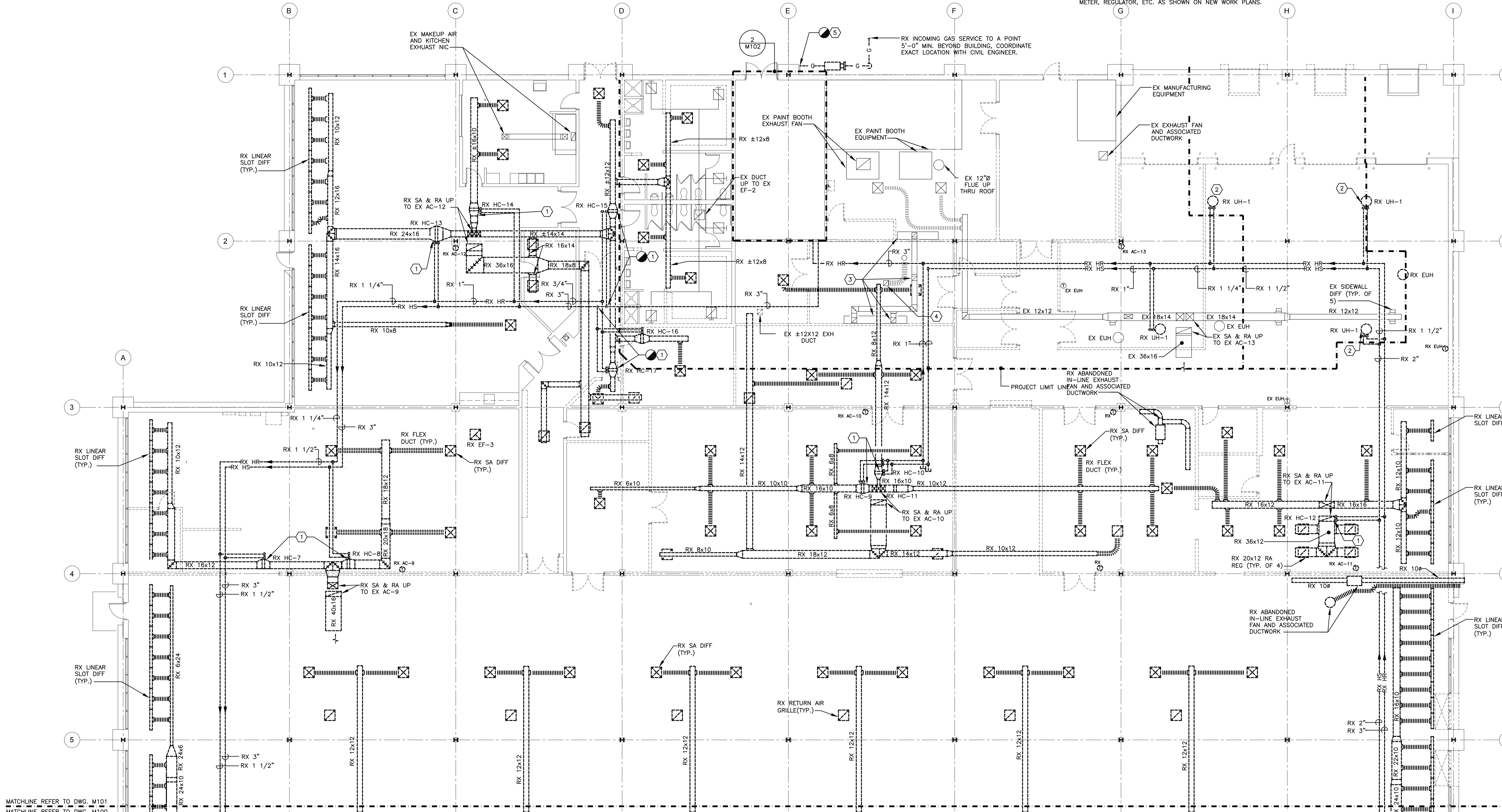


SPECIFIC NOTES: (APPLY TO DRAWING M100 WHERE INDICATED)

- 1 REMOVE EXISTING DUCT HEATING COIL, SUPPORTS, HEATING WATER SUPPLY & RETURN PIPING, VALVING ASSEMBLY, AND CONTROL WIRING.
- 2 REMOVE EXISTING UNIT HEATER, SUPPORTS, HEATING WATER SUPPLY & RETURN PIPING, VALVING ASSEMBLY, AND CONTROL WIRING.
- 3 REMOVE EXISTING EXHAUST HOOD AND ASSOCIATED DUCTWORK UP THROUGH ROOF.
- 4 EXISTING ABANDONED EXHAUST FAN AND ASSOCIATED DUCTWORK UP THROUGH ROOF.
- 5 REMOVE EXISTING GAS SERVICE PIPING TO A POINT 12" MIN. OFF THE BUILDING, RELOCATE GAS METER, REGULATOR, ETC. AS SHOWN ON NEW WORK PLANS.



MATCHLINE REFER TO DWG. M101
MATCHLINE REFER TO DWG. M100

FIRST FLOOR PLAN - MECHANICAL - DEMOLITION

SCALE: 1/8" = 1'-0"

NO.	DATE	REVISIONS	REMARKS

Professional Certification:
I hereby certify that this drawing was prepared or approved by me, and that I am a duly licensed professional engineer under the laws of the State of Maryland.
Expiration Date: 2012-08-15

IOTT
ARCHITECTURE
ENGINEERING
INCORPORATED
310 HAMMOND ST. SUITE 100 SALISBURY, MARYLAND
(410) 759-7259 • FAX (410) 759-9001

TRI - COUNTY COUNCIL
REGIONAL CENTER
ROUTE 50, EAST
SALISBURY, MARYLAND
FIRST FLOOR PLAN - MECHANICAL - DEMOLITION

PRINT DATE: 11/01/10
SQA PROJ. NO.: 2009.0264
DESIGN BY: MWTC
DRAWN BY: TC / JW
SCALE: AS NOTED
STAGE: ISSUED FOR BIDS
DWG. FILE: 090844100-100

M 100
SHEET: 3 OF 28
ISSUED DATE: 11/01/10

