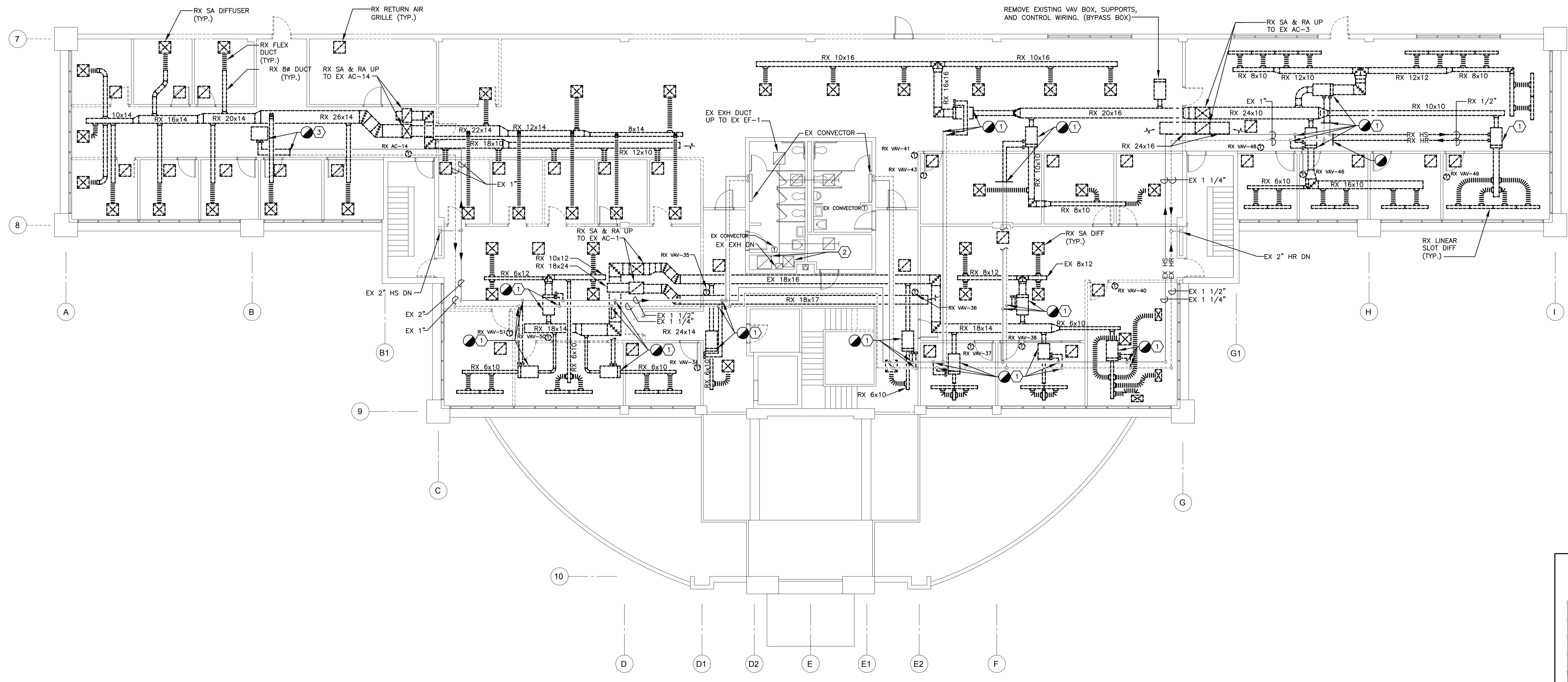


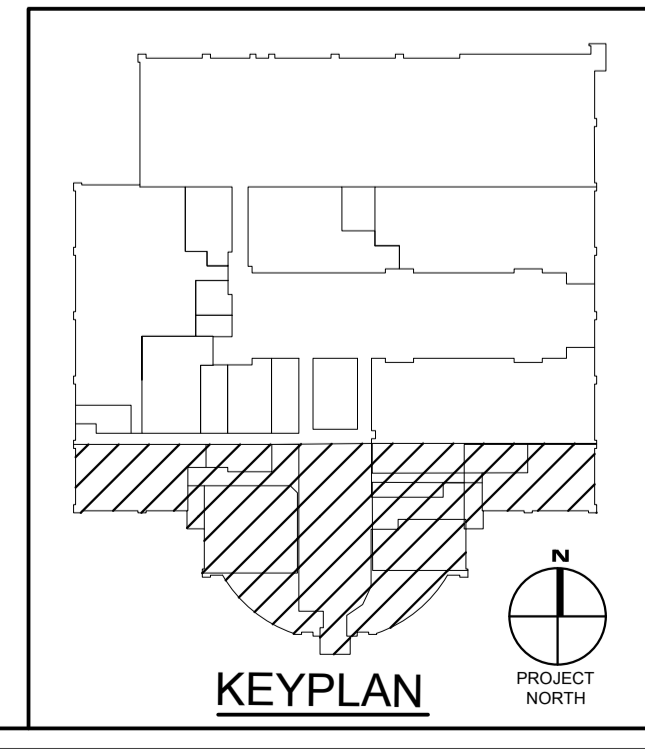
**2 PART PLAN - MECHANICAL ROOM**  
SCALE: 1/4" = 1'-0"

**SPECIFIC NOTES: (APPLY TO DRAWING M102 WHERE INDICATED)**

- 1 REMOVE EXISTING VAV BOX, SUPPORTS, HEATING WATER SUPPLY AND RETURN PIPING, VALVING ASSEMBLY, AND CONTROL WIRING.
- 2 EXISTING SA & RA UP TO EX AC-2 AND DOWN TO FIRST FLOOR TO REMAIN.
- 3 REMOVE EXISTING UNIT HEATER, SUPPORTS, HEATING WATER SUPPLY & RETURN PIPING, VALVING ASSEMBLY, AND CONTROL WIRING.



**1 SECOND FLOOR PLAN - MECHANICAL - DEMOLITION**  
SCALE: 1/8" = 1'-0"



REVISIONS		REMARKS	NO.	DATE	REMARKS

Professional Certification:  
I hereby certify that  
this drawing was  
prepared or approved by  
me, and that I am a  
licensed professional  
engineer under the laws  
of the State of Maryland.  
Expiration Date:  
2012-08-15

ARCHITECTURE  
ENGINEERING  
INCORPORATED

**IOTT**

310 HAMMOND ST. SUITE 100 SALISBURY, MARYLAND  
(410) 750-7229 • FAX (410) 750-9001

TRI - COUNTY COUNCIL  
REGIONAL CENTER  
ROUTE 50, EAST  
SALISBURY, MARYLAND

SECOND FLOOR PLAN - MECHANICAL - DEMOLITION

PRINT DATE: 11/01/10	SPR PROJ. NO.: 2009.0264
DESIGN BY: MWTC	DRAWN BY: TC / MW
SCALE: AS NOTED	STAGE: ISSUED FOR BIDS
DWG. FILE: 090844100-102	ISSUED DATE: 11/01/10

**M 102**

SHEET: 5 OF 28

ISSUED DATE: 11/01/10