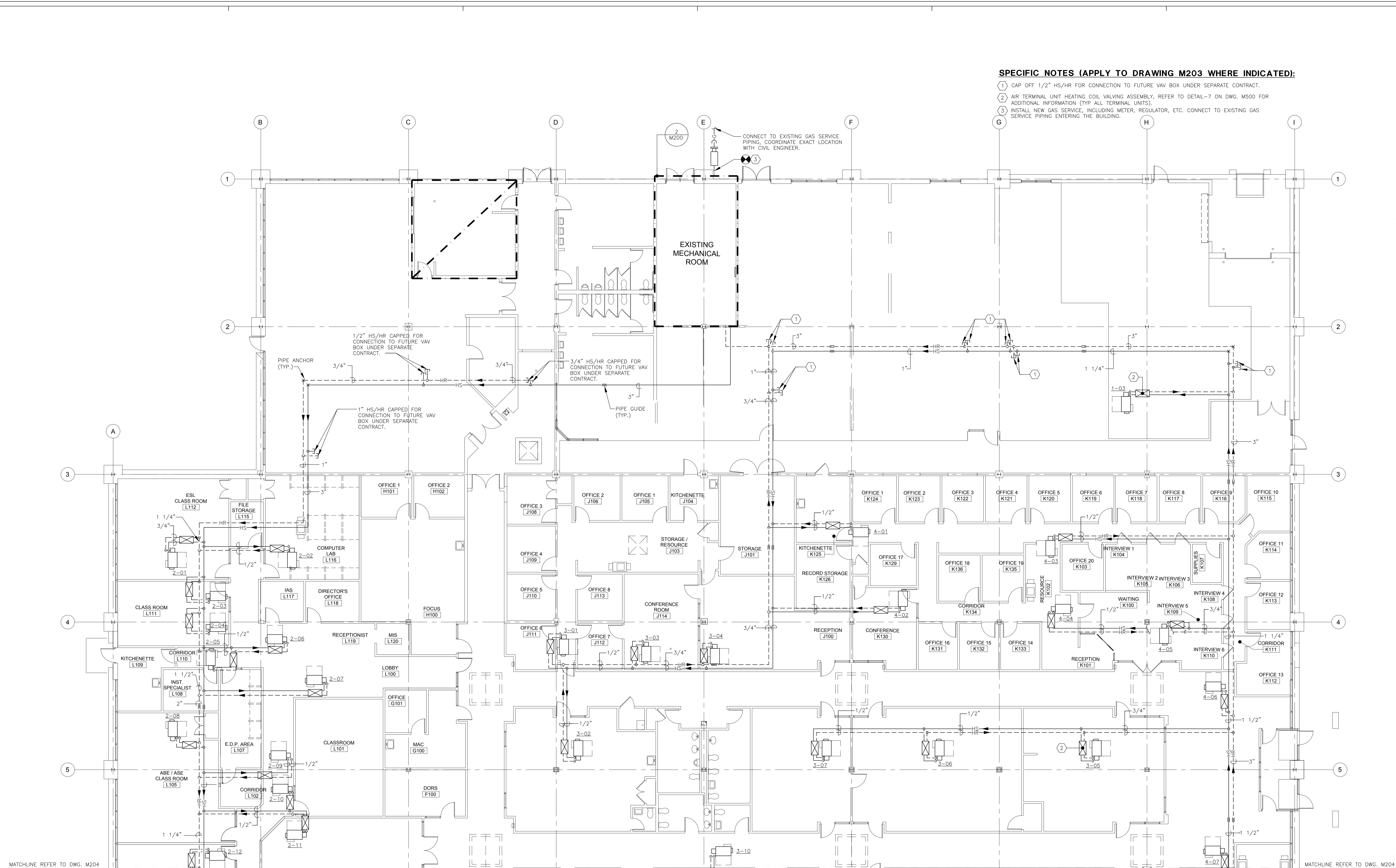


**SPECIFIC NOTES (APPLY TO DRAWING M203 WHERE INDICATED):**

- ① CAP OFF 1/2" HS/HR FOR CONNECTION TO FUTURE VAV BOX UNDER SEPARATE CONTRACT.
- ② AIR TERMINAL UNIT HEATING COIL VALVING ASSEMBLY. REFER TO DETAIL-7 ON DWG. M500 FOR ADDITIONAL INFORMATION (TYP ALL TERMINAL UNITS).
- ③ INSTALL NEW GAS SERVICE, INCLUDING METER, REGULATOR, ETC. CONNECT TO EXISTING GAS SERVICE PIPING ENTERING THE BUILDING.



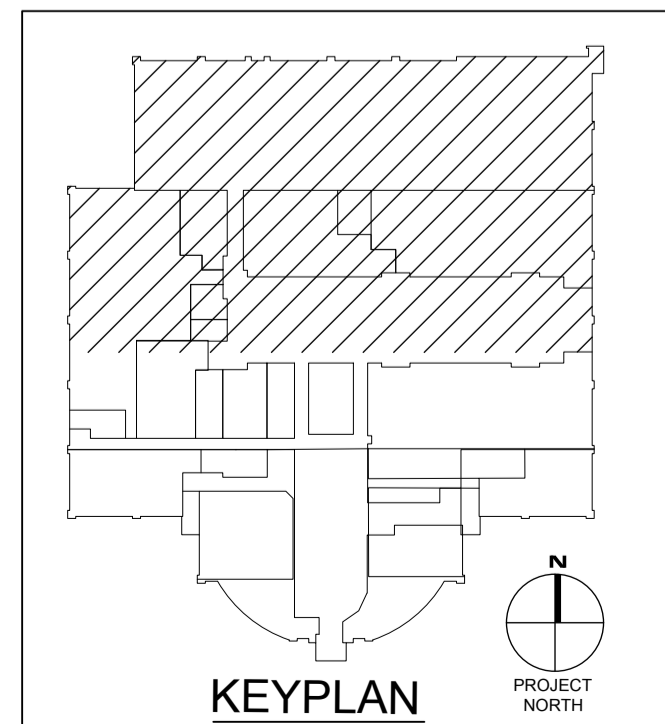
MATCHLINE REFER TO DWG. M204

**FIRST FLOOR PLAN - MECHANICAL PIPING - NEW WORK**

SCALE: 1/8" = 1'-0"

**NOTES:**

1. FOR VAV BOX HS & HR BRANCH PIPE SIZES, REFER TO VAV TERMINAL UNIT SCHEDULE ON DWG. M001.



| NO. | DATE | REMARKS | REVISIONS |
|-----|------|---------|-----------|
|     |      |         |           |
|     |      |         |           |
|     |      |         |           |

Professional Certification:  
 these documents were prepared or approved by a duly licensed professional engineer under the laws of the State of Maryland. License No. 69981. Expiration Date: 2012-08-15.

ARCHITECTURE  
**IOTT**  
 ENGINEERING  
 INCORPORATED  
 SUITE 100  
 SALISBURY, MARYLAND  
 310 HAMMOND ST. • (410) 748-7229 • FAX (410) 748-9000

TRI - COUNTY COUNCIL  
 REGIONAL CENTER  
 ROUTE 50 EAST  
 SALISBURY, MARYLAND  
 FIRST FLOOR PLAN - MECHANICAL - NEW WORK

PRINT DATE: 11/01/10  
 SPA PROJ. NO.: 2009.0284  
 DESIGN BY: MW/TC  
 DRAWN BY: TC/MW  
 SCALE: AS NOTED  
 STAGE: ISSUED FOR BIDS  
 DWG. FILE: 0284R205.205

**M 203**  
 SHEET: 11 OF 26  
 ISSUED DATE: 11/01/10