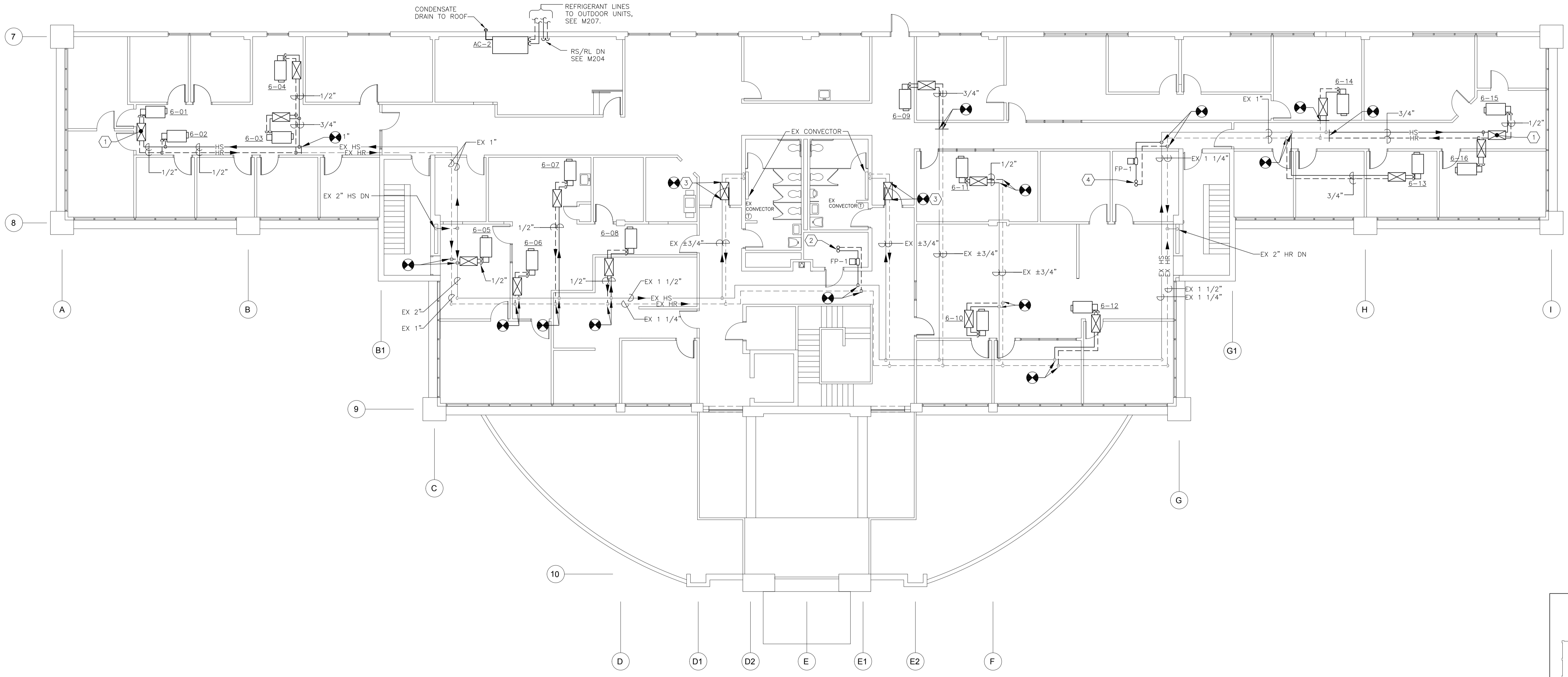


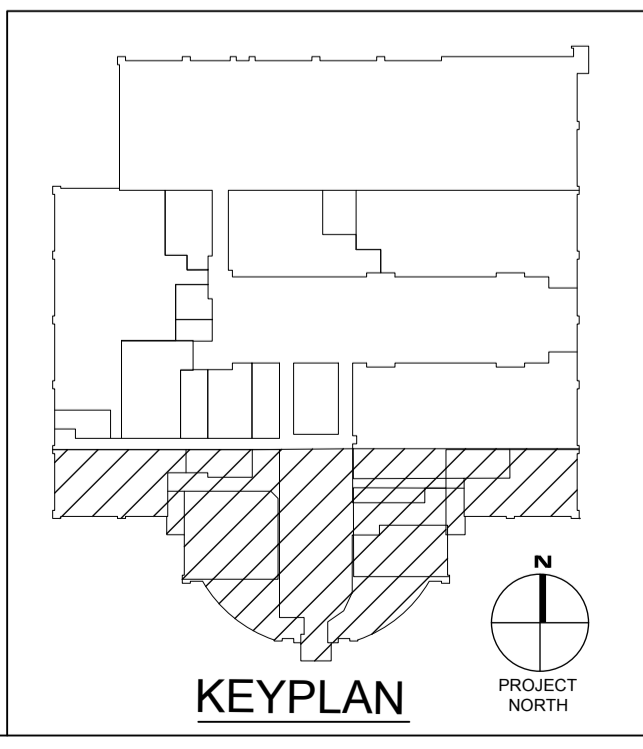
SPECIFIC NOTES (APPLY TO DRAWING M205 WHERE INDICATED):

- ① AIR TERMINAL UNIT HEATING COIL VALVING ASSEMBLY, REFER TO DETAIL-7 ON DWG. M500 FOR ADDITIONAL INFORMATION (TYP ALL TERMINAL UNITS).
- ② 3/4" HS/HR UP TO RAC-5, REFER TO DETAIL-11 ON DWG. M500 FOR PIPING AND VALVING.
- ③ EXISTING CONVERTOR HEATING COIL VALVING ASSEMBLY, REFER TO DETAIL-12 ON DWG. M500 FOR ADDITIONAL INFORMATION.
- ④ 3/4" HS/HR UP TO RAC-6, REFER TO DETAIL-11 ON DWG. M500 FOR PIPING AND VALVING.



SECOND FLOOR PLAN - MECHANICAL PIPING - NEW WORK

SCALE: 1/8" = 1'-0"
 NOTES:
 1. FOR VAV BOX HS & HR BRANCH PIPE SIZES, REFER TO VAV TERMINAL UNIT SCHEDULE ON DWG. M001.



REVISIONS	
NO.	DATE

Professional Certification. These documents were prepared or approved by a duly licensed professional engineer under the laws of the State of Maryland. License No. 69981, Expiration Date: 2012-08-15.

ARCHITECTURE
 ENGINEERING
 INCORPORATED
 SUITE 108 SALISBURY, MARYLAND
 (410) 749-7229 • FAX (410) 749-9001

TRI - COUNTY COUNCIL
 REGIONAL CENTER
 ROUTE 50 EAST
 SALISBURY, MARYLAND
 SECOND FLOOR PLAN - MECHANICAL - NEW WORK

PRINT DATE: 11/01/10
 SPA PROJ. NO.: 2009.0264
 DESIGN BY: MWTC
 DRAWN BY: TC/MW
 SCALE: AS NOTED
 STAGE: ISSUED FOR BIDS
 DWG. FILE: 0264M205.05

M 205
 SHEET: 13 OF 26
 ISSUED DATE: 11/01/10