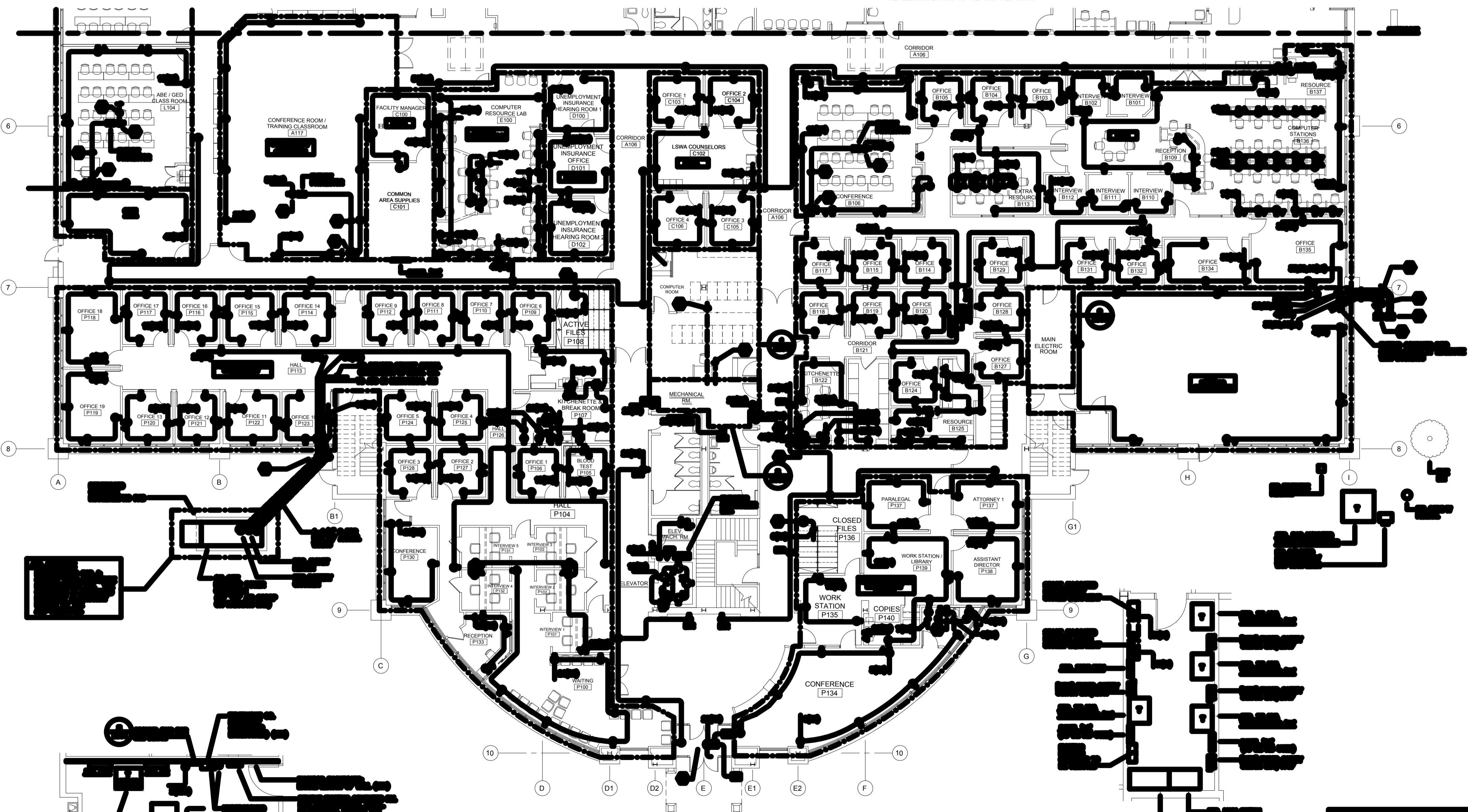


- GENERAL NOTES:**
- 1. ALL ROOMS SHALL BE FINISHED TO THE FINISHES SHOWN ON THE FINISH SCHEDULE.
 - 2. ALL ROOMS SHALL BE FINISHED TO THE FINISHES SHOWN ON THE FINISH SCHEDULE.
 - 3. ALL ROOMS SHALL BE FINISHED TO THE FINISHES SHOWN ON THE FINISH SCHEDULE.
 - 4. ALL ROOMS SHALL BE FINISHED TO THE FINISHES SHOWN ON THE FINISH SCHEDULE.
 - 5. ALL ROOMS SHALL BE FINISHED TO THE FINISHES SHOWN ON THE FINISH SCHEDULE.
 - 6. ALL ROOMS SHALL BE FINISHED TO THE FINISHES SHOWN ON THE FINISH SCHEDULE.
 - 7. ALL ROOMS SHALL BE FINISHED TO THE FINISHES SHOWN ON THE FINISH SCHEDULE.
 - 8. ALL ROOMS SHALL BE FINISHED TO THE FINISHES SHOWN ON THE FINISH SCHEDULE.
 - 9. ALL ROOMS SHALL BE FINISHED TO THE FINISHES SHOWN ON THE FINISH SCHEDULE.
 - 10. ALL ROOMS SHALL BE FINISHED TO THE FINISHES SHOWN ON THE FINISH SCHEDULE.



REVISIONS

NO.	DATE	DESCRIPTION
1		
2		
3		
4		
5		
6		
7		
8		
9		
10		

SCHEMBERG PARTNERSHIP ARCHITECTURE ENGINEERING INCORPORATED
 310 HANOVER STREET, SUITE 200, SALISBURY, MARYLAND 21801
 TEL: 410-541-2222 FAX: 410-541-2223

TRI-COUNTY COUNCIL REGIONAL CENTER ROUTE 50, EAST SALISBURY, MARYLAND

FIRST FLOOR PLAN - POWER

LOTT
 ARCHITECTURE ENGINEERING INCORPORATED
 310 HANOVER STREET, SUITE 200, SALISBURY, MARYLAND 21801
 TEL: 410-541-2222 FAX: 410-541-2223

E 300

KEY PLAN

1 FIRST FLOOR PLAN - POWER

2 FIRST FLOOR PLAN - MECHANICAL ROOM

3 FIRST FLOOR PLAN - MECHANICAL ROOM

